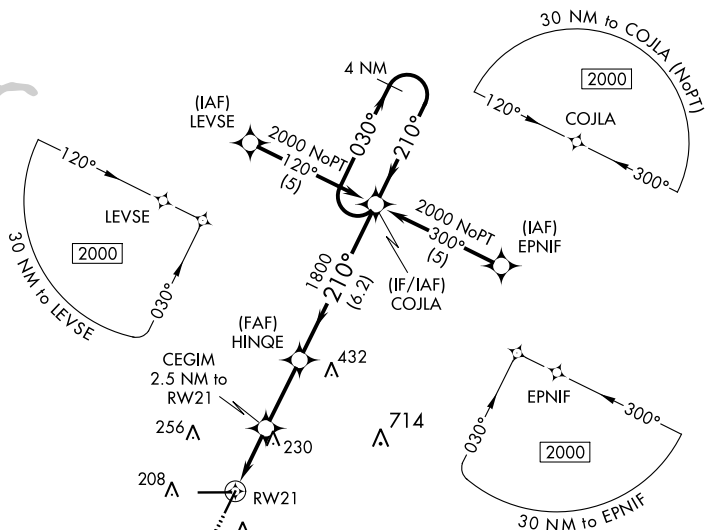


RNAV (GPS) RWY 21  
BROOKSVILLE-TAMPA BAY RGNL (BKV)

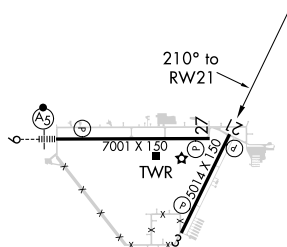
**T** When local altimeter setting not received, use Tampa Intl altimeter setting and increase all MDA 80 feet and increase LNAV Cat C and Circling Cats C and D visibility  $\frac{1}{4}$  mile.

MISSED APPROACH: Climb to 2000 direct MUCRO and hold.

UNICOM  
123.0



TDZE 69



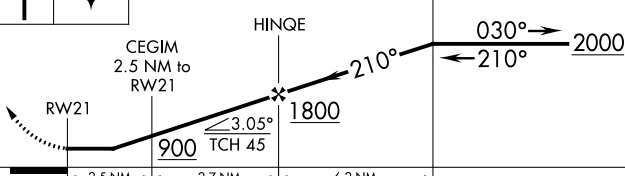
MISSED APCH FIX



MUCRO

VGSI and descent angles not coincident  
(VGSI Angle 3.00/TCH 39).

4 NM  
Holding Pattern



---

MIRL Rwy 3-21 and 9-27 **L**

Amdt 1E 18JUL19

BROOKSVILLE-TAMPA BAY RGNL (BKV)

RNAV (GPS) RWY 21

28°28'N-82°27'W

500-1 431 (500-1)

431 (500-1¼)

31 (500-1½)