

WAAS CH <b>99605</b> <b>W07A</b>	APP CRS <b>071°</b>	Rwy Idg <b>5008</b> TDZE <b>5</b> Apt Elev <b>5</b>
--	------------------------	---

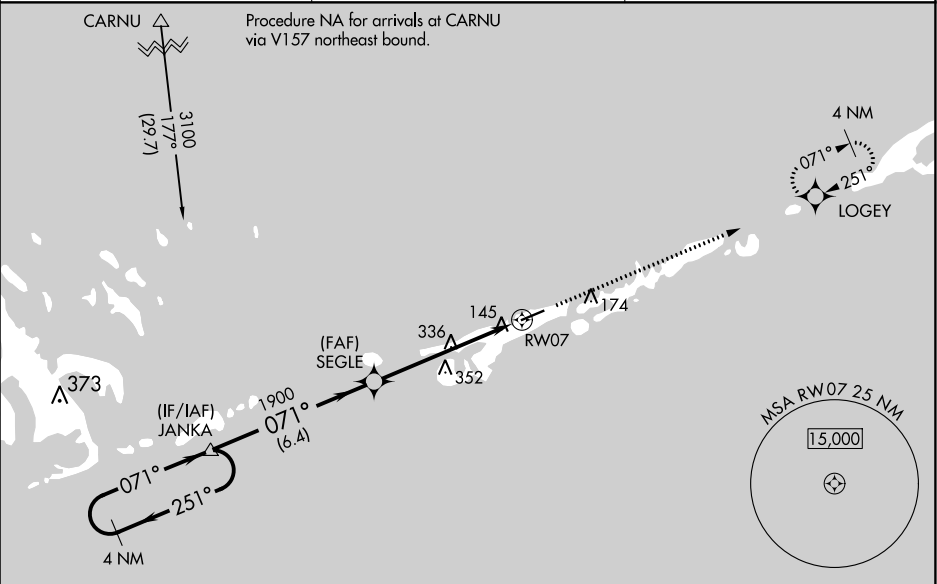
**RNAV (GPS) RWY 7**  
THE FLORIDA KEYS MARATHON INTL (MTH)

**⚠** Baro-VNAV NA when using Key West Intl altimeter setting. For uncompensated Baro-VNAV systems, LNAV/VNAV NA below -15°C (5°F) or above 49°C (120°F). DME/DME RNP-0.3 NA.

**⚠** Helicopter visibility reduction below ¾ SM NA. When local altimeter setting not received, use Key West Intl altimeter setting and increase all DAs 93 feet, increase all MDAs 100 feet, increase LPV and LNAV/VNAV all Cats visibility ½ mile, LNAV Cats C and D visibility ½ mile, and Circling Cat C visibility ½ mile, Circling Cat D visibility ¼ mile.

**MISSED APPROACH:**  
Climb to 2000 direct LOGEY and hold.

ASOS <b>135.525</b>	MIAMI CENTER <b>133.5 306.9</b>	UNICOM <b>122.975 (CTAF) 0</b>
------------------------	------------------------------------	-----------------------------------



**ELEV 5** **TDZE 5**

**4 NM Holding Pattern**

**VGSI and RNAV glidepath not coincident (VGSI Angle 3.00/TCH 24).**

**JANKA**

**GP 3.00° TCH 40**

**3100**

**251°**

**071°**

**071°**

**1900**

**6.4 NM**

**5.7 NM**

**SEGLE**

**RW07**

**2000**

**LOGEY**

**5008 X 100**

**62**

**071° to RW07**

**REIL Rwy 7 0**

**MIRL Rwy 7-25 0**

CATEGORY	A	B	C	D
LPV DA		389-1¼	384 (400-1¼)	
LNAV/VNAV DA		441-1½	436 (500-1½)	
LNAV MDA	600-1	595 (600-1)	600-1½ 595 (600-1½)	600-1¾ 595 (600-1¾)
CIRCLING	600-1	595 (600-1)	600-1½ 595 (600-1½)	600-2 595 (600-2)

SE-3, 31 DEC 2020 to 28 JAN 2021

SE-3, 31 DEC 2020 to 28 JAN 2021