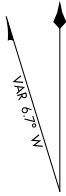


AIRPORT DIAGRAM

AL-6440 (FAA)

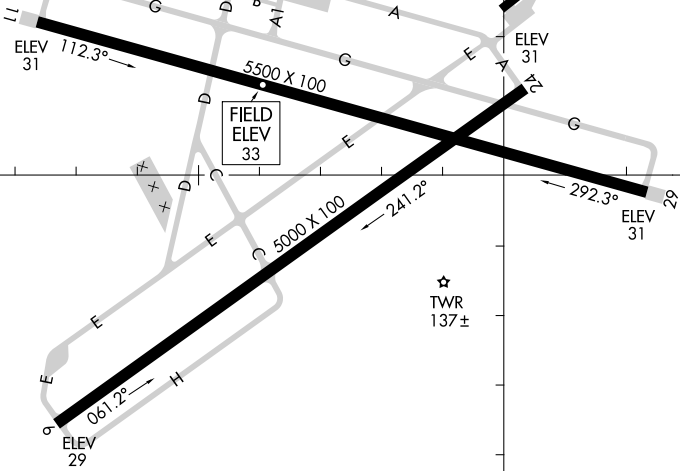
FLAGLER EXECUTIVE (FIN)
PALM COAST, FLORIDA

ATIS
128.325
FLAGLER TOWER ★
118.95
GND CON
121.75
CLNC DEL
121.75



JANUARY 2020
ANNUAL RATE OF CHANGE
0.1° W

CORPORATE HANGAR
TANK
HANGARS
FIRE STATION
HANGAR
FBO
CORPORATE HANGARS
NATIONAL GUARD ARMORY



RWY 06-24
PCN 19 F/B/Y/T
S-60
RWY 11-29
PCN 27 F/A/X/T
S-60

CAUTION: BE ALERT TO RUNWAY CROSSING CLEARANCES.
READBACK OF ALL RUNWAY HOLDING INSTRUCTIONS IS REQUIRED.

SE-3, 31 DEC 2020 to 28 JAN 2021

SE-3, 31 DEC 2020 to 28 JAN 2021

AIRPORT DIAGRAM

PALM COAST, FLORIDA
FLAGLER EXECUTIVE (FIN)