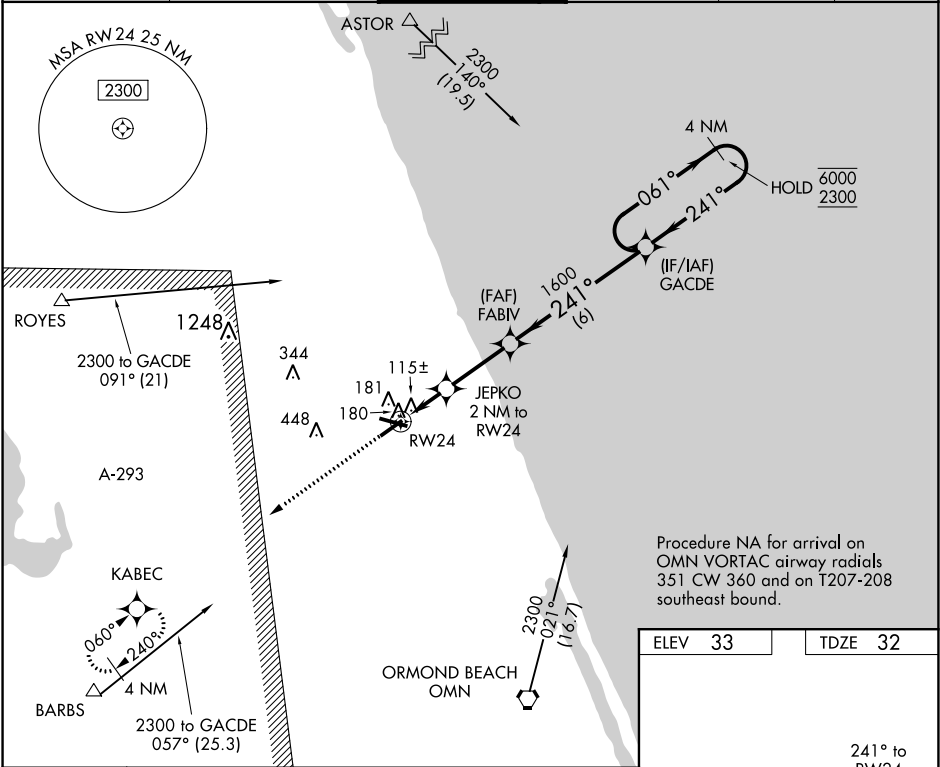


WAAS CH <b>86742</b> <b>W24A</b>	APP CRS <b>241°</b>	Rwy Idg TDZE Apt Elev	<b>5000</b> <b>32</b> <b>33</b>
--	------------------------	-----------------------------	---------------------------------------

**RNAV (GPS) RWY 24**  
FLAGLER EXECUTIVE (FIN)

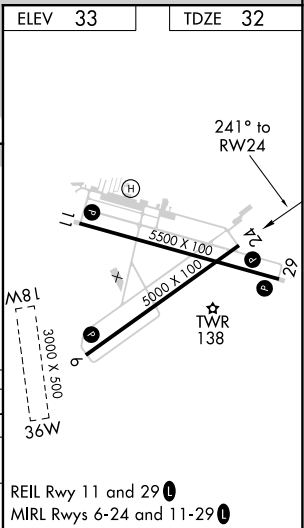
RNP APCH.	MISSED APPROACH: Climb to 2300 direct KABEC and hold.
▼ Circling Rwy 11, 29 NA at night. Rwy 24 helicopter visibility reduction below ¾ SM NA. Circling NA to Rwys 18W and 36W.	

ATIS <b>128.325</b>	DAYTONA APP CON <b>125.8 269.075</b>	FLAGLER TOWER ★ <b>118.95</b> (CTAF) 0	GND CON <b>121.75</b>	CLNC DEL <b>121.75</b>	UNICOM <b>123.0</b>
------------------------	---	---	--------------------------	---------------------------	------------------------



Procedure NA for arrival on OMN VORTAC airway radials 351 CW 360 and on T207-208 southeast bound.

2300	KABEC				
↑	✴				
		JEPKO 2 NM to RW24	FABIV	GACDE	4 NM Holding Pattern
		1 NM to RW24	3.00° TCH 40	241°	061° → 6000 ← 241° 2300
		RW24	✴	1600	
		700			
		1 NM 1 NM 2.8 NM	6 NM		
CATEGORY		A	B	C	D
LP MDA		380-1 348 (400-1)			
LNAV MDA		440-1 408 (500-1)		440-1½ 408 (500-1½)	
CIRCLING		500-1 467 (500-1)		760-2 727 (800-2)	760-2¼ 727 (800-2¼)



SE-3, 31 DEC 2020 to 28 JAN 2021

SE-3, 31 DEC 2020 to 28 JAN 2021