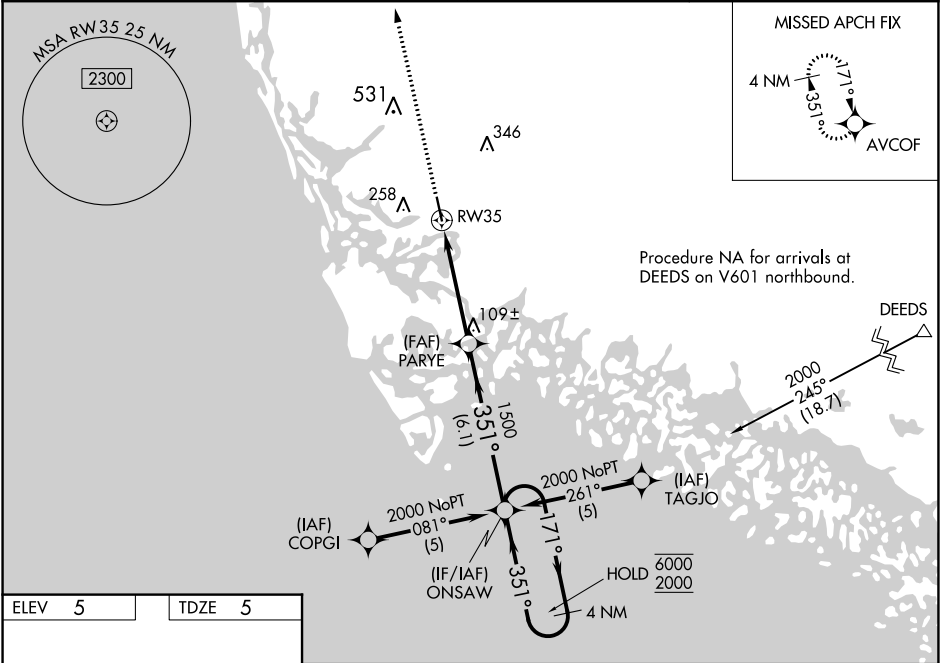


WAAS CH 53316 W35A	APP CRS 351°	Rwy Idg TDZE 5 Apt Elev 5
--	------------------------	---

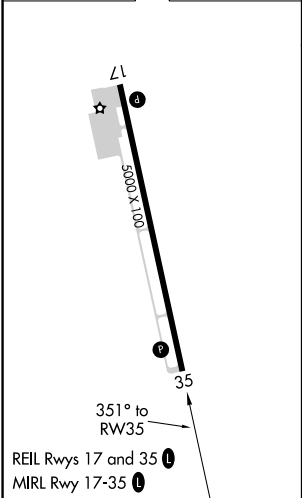
RNAV (GPS) RWY 35
MARCO ISLAND EXECUTIVE (MKY)

PBN APCH.	Baro-VNAV and VDP NA when using Naples altimeter setting. Rwy 35 helicopter visibility reduction below 3/4 SM NA. When local altimeter setting not received, use Naples altimeter setting and increase LPV DA to 312 feet, LNAV/VNAV DA to 420 feet, and all MDA 40 feet. For uncompensated Baro-VNAV systems, LNAV/VNAV NA below 2°C or above 54°C.	MISSED APPROACH: Climb to 3000 direct AVCOF and hold, continue climb-in-hold to 3000.
-----------	--	---

AWOS-3PT 120.075	FORT MYERS APP CON ★ 124.125 371.85	CLNC DEL 120.8	UNICOM 122.7 (CTAF) 0
----------------------------	---	--------------------------	--



ELEV 5	TDZE 5
---------------	---------------



3000	AVCOF	VGSI and RNAV glidepath not coincident (VGSI Angle 3.00/TCH 32).	4 NM
*LNAV only.	PARYE	1500	351°
RW35	*1.5 NM to RW35	1500	171°
1.5 NM	3 NM	6.1 NM	6000/2000
CATEGORY	A	B	C
LPV DA	286-1	281 (300-1)	
LNAV/VNAV DA	394-1½	389 (400-1½)	
LNAV MDA	520-1	515 (600-1)	520-1½ 515 (600-1½)
CIRCLING	620-1	615 (700-1)	620-1¾ 615 (700-1¾)

SE-3, 31 DEC 2020 to 28 JAN 2021

SE-3, 31 DEC 2020 to 28 JAN 2021