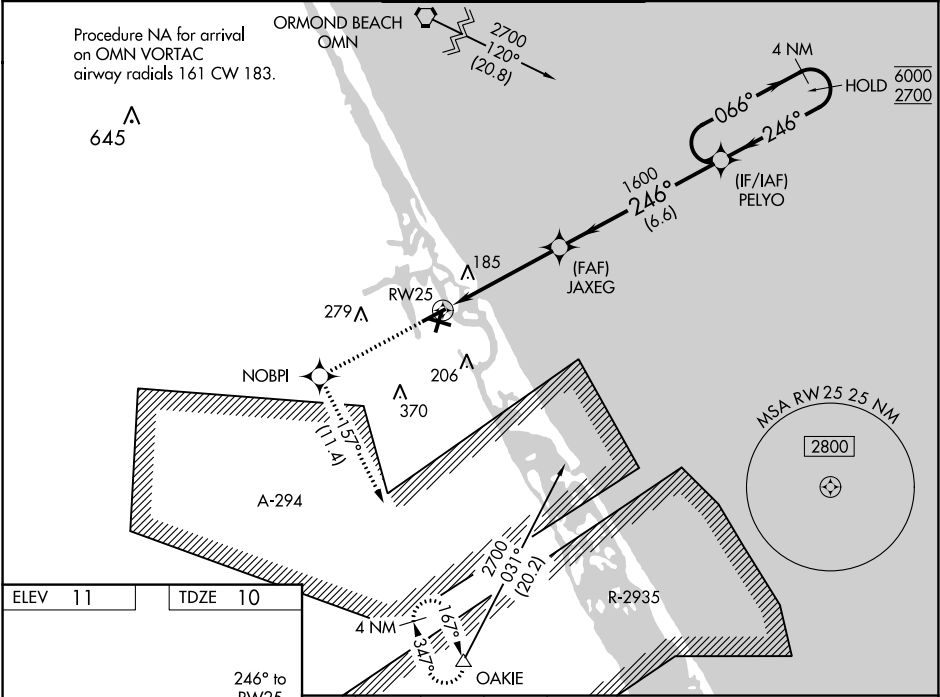


WAAS CH <b>50500</b> <b>W25A</b>	APP CRS <b>246°</b>	Rwy Idg <b>4700</b> TDZE <b>10</b> Apt Elev <b>11</b>
--	------------------------	---

RNAV (GPS) RWY 25  
NEW SMYRNA BEACH MUNI (EVB)

RNP APCH.	MISSED APPROACH: Climb to 4000 direct NOBPI and on track 1.57° to OAKIE and hold, continue climb-in-hold to 4000.
-----------	---

ATIS <b>124.625</b>	DAYTONA APP CON <b>125.35 322.3</b>	NEW SMYRNA TOWER ★ <b>119.675 (CTAF) 0</b>	GND CON <b>121.325</b>	UNICOM <b>122.95</b>
------------------------	--	---	---------------------------	-------------------------



ELEV 11	TDZE 10	4000 NOBPI tr 1.57° OAKIE VGSI and RNAV glidepath not coincident (VGSI Angle 3.00/TCH 46).				4 NM Holding Pattern
		PELYO		066° → 6000 ← 246° 2700		GP 3.00° TCH 60
		JAXEG 1600		246°		1600
		RW25		4.7 NM		6.6 NM
CATEGORY	A	B	C	D		
LPV DA	303-1 293 (300-1)				NA	
LNAV MDA	440-1 430 (500-1)		440-1 430 (500-1 1/4)		NA	
CIRCLING	440-1 429 (500-1)		520-1 509 (600-1)		680-1 669 (700-1 3/4) NA	

SE-3, 31 DEC 2020 to 28 JAN 2021

SE-3, 31 DEC 2020 to 28 JAN 2021