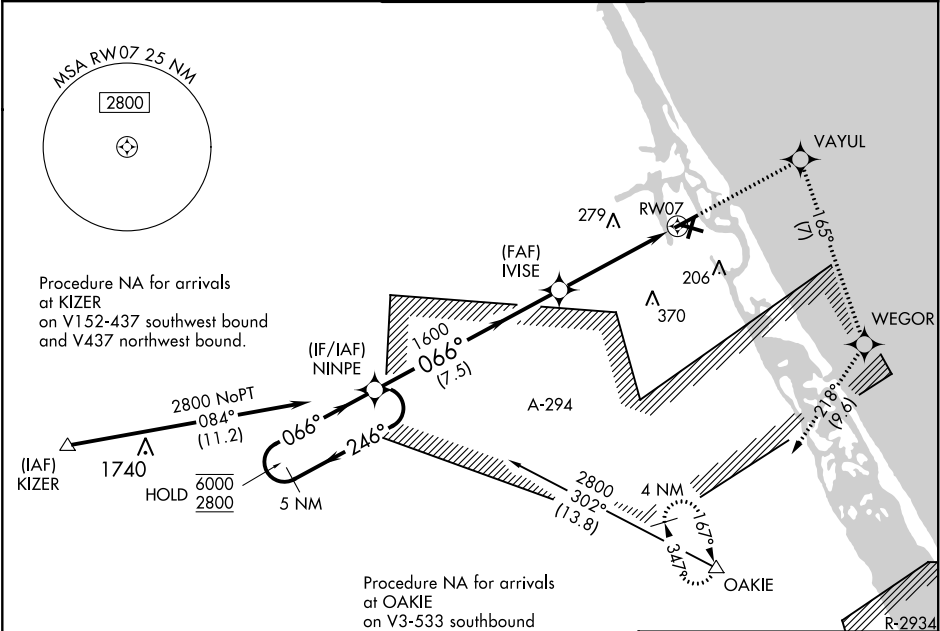


APP CRS	Rwy Idg	4665
066°	TDZE	9
	Apt Elev	11

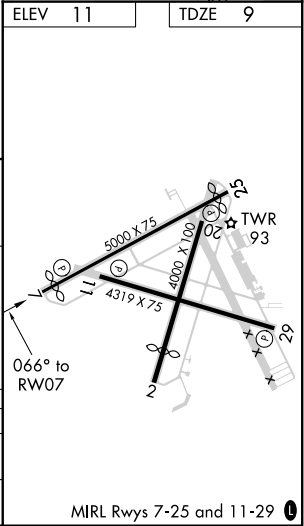
RNAV (GPS) RWY 7
NEW SMYRNA BEACH MUNI (EVB)

RNP APCH.	MISSED APPROACH: Climb to 2800 direct VAYUL and right turn on track 165° to WEGOR and on track 218° to OAKIE and hold.
<p>▼ ▲</p> <p>Rwy 7 helicopter visibility reduction below 3/4 SM NA. VDP NA when using Daytona Beach altimeter setting. Circling Rwy 11, 25 NA at night. When local altimeter setting not received, use Daytona Beach altimeter setting and increase all MDA 40 feet and UNAV Cat C visibility 1/8 SM.</p>	

ATIS	DAYTONA APP CON	NEW SMYRNA TOWER★	GND CON	UNICOM
124.625	125.35 322.3	119.675 (CTAF) 0	121.325	122.95



5 NM Holding Pattern		2800	VAYUL	WEGOR	OAKIE
NINPE		↑	↻ tr 165°	↻ tr 218°	△
6000 ← 246°		IVISE			
2800 → 066°		1.4 NM to RW07			
		RW07			
		3.00° TCH 40			
		7.5 NM			
		3.4 NM			
		1.4			
CATEGORY	A	B	C	D	
LNAV MDA	500-1	491 (500-1)	500-1 3/8 491 (500-1 3/8)	500-1 1/2 491 (500-1 1/2)	
CIRCLING	500-1 489 (500-1)	520-1 509 (600-1)	680-2 669 (700-2)	680-2 1/4 669 (700-2 1/4)	



SE-3, 31 DEC 2020 to 28 JAN 2021

SE-3, 31 DEC 2020 to 28 JAN 2021