

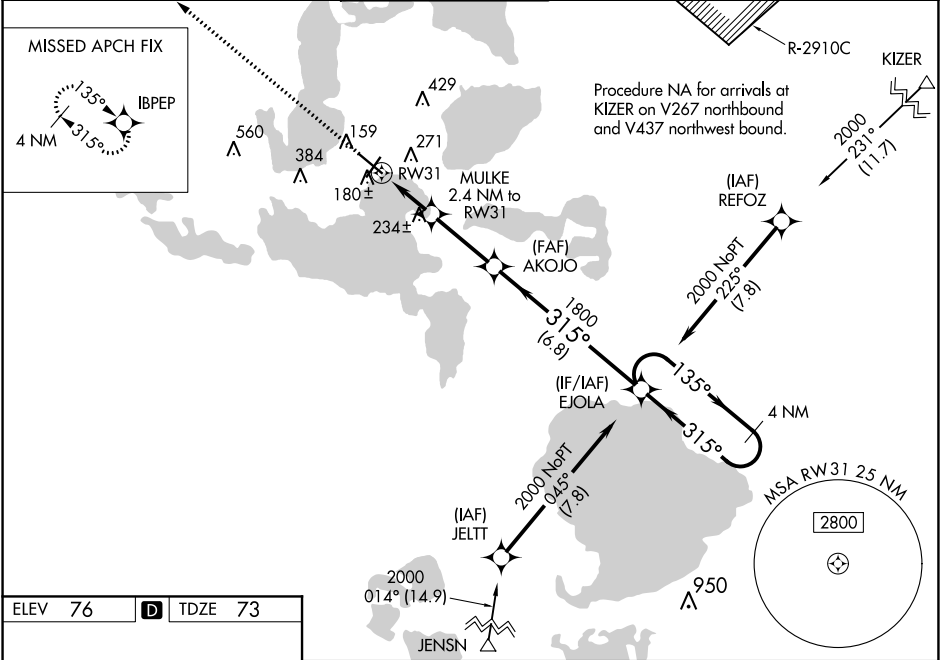
WAAS CH 97602 W31A	APP CRS 315°	Rwy Idg 5900 TDZE 73 Apt Elev 76
--	------------------------	---

RNAV (GPS) RWY 31
LEESBURG INTL (LEE)

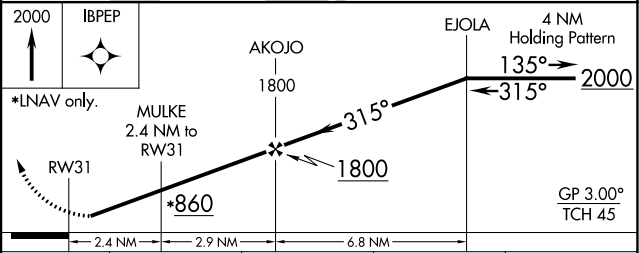
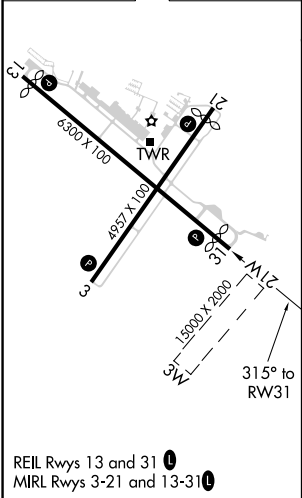
⚠ Baro-VNAV NA when using Orlando Intl altimeter setting. For uncompensated Baro-VNAV systems, LNAV/VNAV NA below -15°C (5°F) or above 43°C (109°F). DME/DME RNP-0.3 NA. Helicopter visibility reduction below 1 SM NA. When local altimeter setting not received, use Orlando Intl altimeter setting and increase all DA 85 feet and all MDA 100 feet; increase LPV all Cats visibility 1/8 mile, increase LNAV/VNAV all Cats, LNAV and Circling Cats C/D visibility 1/4 mile. When VGSI inop, Straight-in/Circling Rwy 31 procedure NA at night. When VGSI inop, Circling Rwy 3 and 21 NA at night.

MISSED APPROACH:
Climb to 2000 direct
IBPEP and hold.

ASOS 134.325	ORLANDO APP CON 135.3 351.9	LEESBURG TOWER ★ 119.35 (CTAF)	GND CON 121.725	GCO 121.725	UNICOM 122.725
------------------------	---------------------------------------	--	---------------------------	-----------------------	--------------------------



ELEV 76	D	TDZE 73
---------	----------	---------



CATEGORY	A	B	C	D
LPV DA	323-1 250 (300-1)			
LNAV/VNAV DA	357-1 284 (300-1)			
LNAV MDA	500-1 427 (500-1)	500-1¼ 427 (500-1¼)		
CIRCLING	700-1 624 (700-1)	700-1¾ 624 (700-1¾)	700-2 624 (700-2)	

SE-3, 31 DEC 2020 to 28 JAN 2021

SE-3, 31 DEC 2020 to 28 JAN 2021