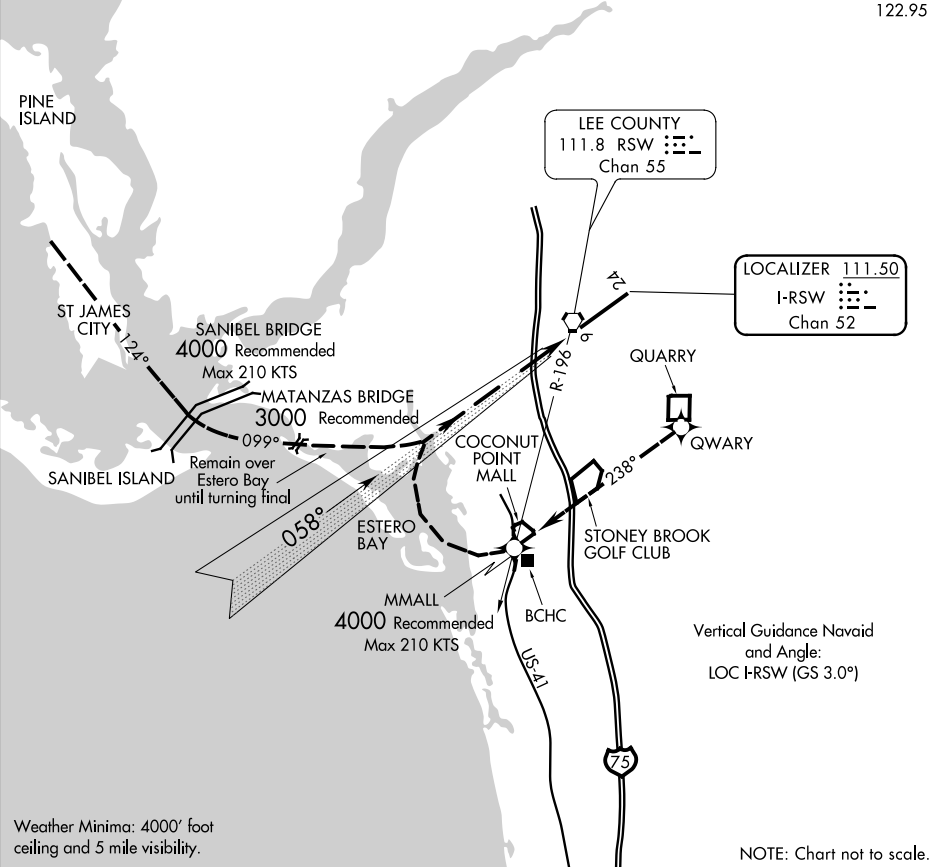


BAY VISUAL RWY 6

D-ATIS
124.65
★ FORT MYERS APP CON
125.15 306.2
★ FORT MYERS TOWER
128.75 (CTAF) 257.8
CLNC DEL
132.075
CPDLC
GND CON
121.9 257.8
UNICOM
122.95

Procedure NA at night.
RADAR REQUIRED



1	2	3	4	5	6	7	8	9	10	11	12	13	14	15	16
---	---	---	---	---	---	---	---	---	----	----	----	----	----	----	----

BAY VISUAL APPROACH RUNWAY 6

From EAST proceed direct to the quarry (over the Rock Quarry Midfield right downwind runway six) then direct and abeam the Coconut Point Mall. Turn base over Estero Bay and remain over the bay until turning final.

From WEST proceed direct to Pine Island then direct to the Sanibel Bridge (heading 124°) then direct to the Matanzas Pass Bridge (heading 99°). Remain over the middle of Estero Bay until turning final.