

WAAS CH 70319 W24A	APP CRS 238°	Rwy ldg 12000 TDZE 30 Apt Elev 30
----------------------------------------	------------------------	--------------------------------------------------------------

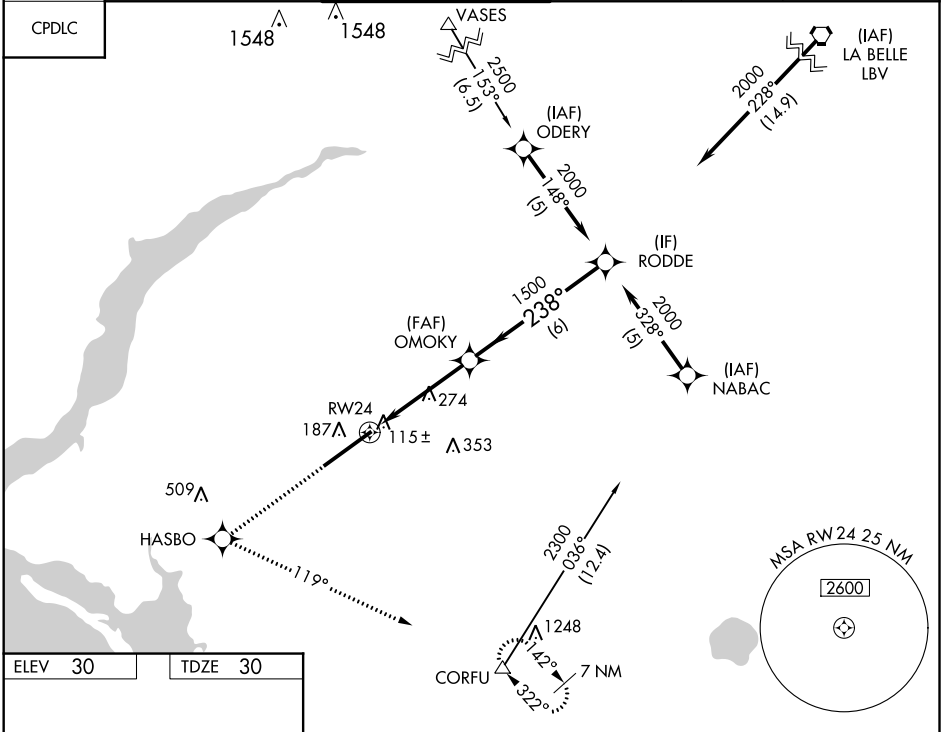
RNAV (GPS) RWY 24

SOUTHWEST FLORIDA INTL (RSW)

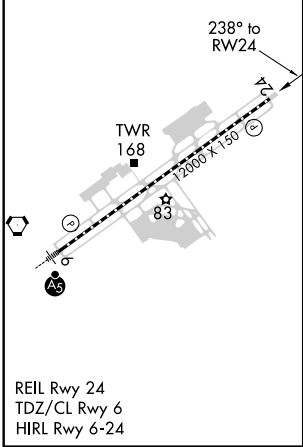
For uncompensated Baro-VNAV systems, LNAV/VNAV NA below -15°C (5°F) or above 48°C (118°F).
DME/DME RNP-0.3 NA.



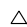
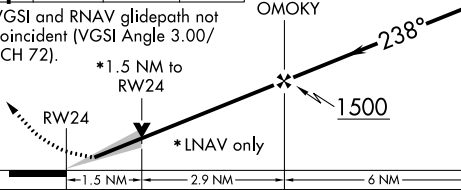
MISSED APPROACH: Climb to 2300 direct HASBO and left turn via 119° track to CORFU and hold.

D-ATIS 124.65	FORT MYERS APP CON ★ 126.8 306.2	FORT MYERS TOWER ★ 128.75 (CTAF) 0 257.8	GND CON 121.9 257.8	CLNC DEL 132.075	UNICOM 122.95
-------------------------	--------------------------------------------	----------------------------------------------------	-------------------------------	----------------------------	-------------------------



ELEV 30	TDZE 30
---------	---------



2300		HASBO		CORFU		RODDE	
							
		tr 119°					
VGSi and RNAV glidepath not coincident (VGSi Angle 3.00/TCH 72).				OMOKY		2000	
						Procedure Turn NA	
		* 1.5 NM to RW24		* LNAV only		GP 3.00° TCH 52	
		1.5 NM		2.9 NM		6 NM	
CATEGORY	A		B		C		D
LPV DA			280-3 ⁴ / ₄		250 (300-3 ⁴ / ₄)		
LNAV/VNAV DA			420-1 ¹ / ₄		390 (400-1 ¹ / ₄)		
LNAV MDA	580-1		550 (600-1)		580-1 ¹ / ₂ 550 (600-1 ¹ / ₂)		580-1 ³ / ₄ 550 (600-1 ³ / ₄)
CIRCLING	580-1		550 (600-1)		580-1 ¹ / ₂ 550 (600-1 ¹ / ₂)		580-2 550 (600-2)