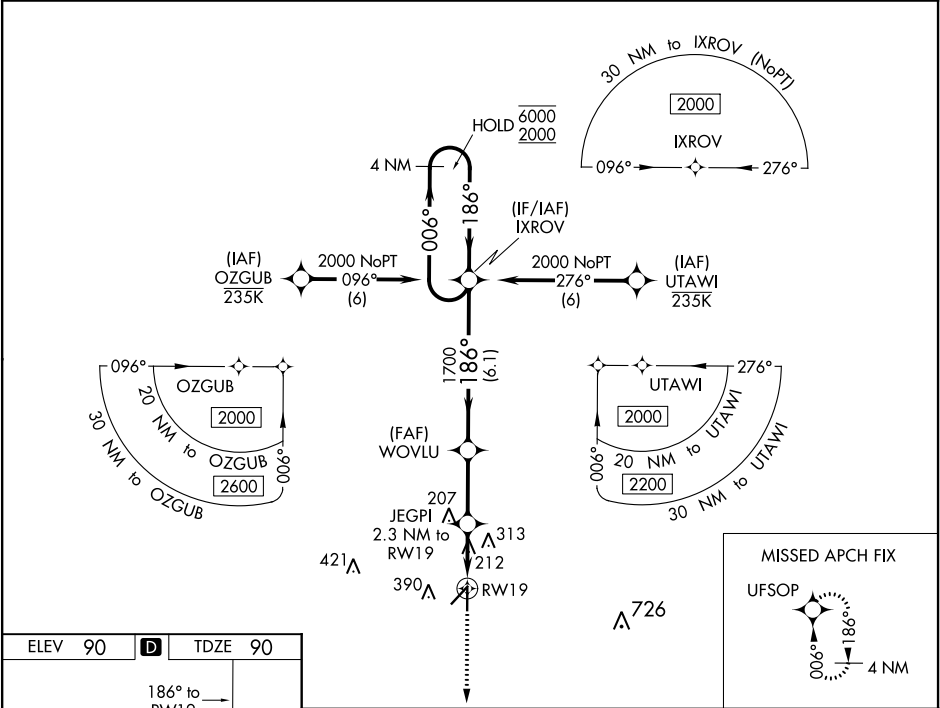


WAAS CH 78436 W19A	APP CRS 186°	Rwy Idg TDZE 90 Apt Elev 90	4694
--	------------------------	---	-------------

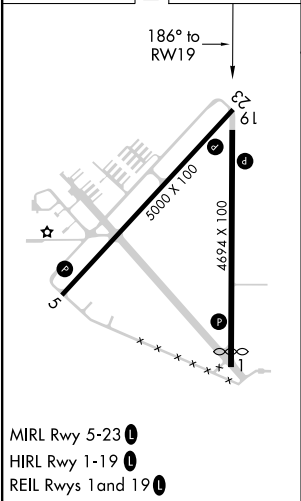
RNAV (GPS) RWY 19

ZEPHYRHILLS MUNI (ZPH)

RNP APCH. ▼ For uncompensated Baro-VNAV systems, LNAV/VNAV NA below -15°C or above 54°C. ▲ MISSED APPROACH: Climb to 2000 direct UFSOP and hold.	
AWOS-3PT 118.975	TAMPA APP CON 119.9 290.3
UNICOM 123.075 (CTAF) 0	



ELEV 90	D	TDZE 90
---------	----------	---------



MIRL Rwy 5-23 0
HIRL Rwy 1-19 0
REIL Rwy 1 and 19 0

2000 UFSOP		VGSi and RNAV glidepath not coincident (VGSi Angle 3.00/TCH 43).		IXROV		4 NM Holding Pattern	
*LNAV only.		JEGPI 2.3 NM to RW19		WOVLU 1700		006° → 6000 ← 186° 2000	
RW19		*1.1 NM to RW19		860*		GP 3.00° TCH 40	
1.1 NM		1.2 NM		2.6 NM		6.1 NM	
CATEGORY		A	B	C	D		
LPV DA			340-7/8	250 (300-7/8)			
LNAV/VNAV DA			380-1	290 (300-1)			
LNAV MDA		480-1	390 (400-1)	480-1 1/8	390 (400-1 1/8)		
C CIRCLING		740-1	650 (700-1)	740-1 3/4	650 (700-1 3/4)	740-2	650 (700-2)