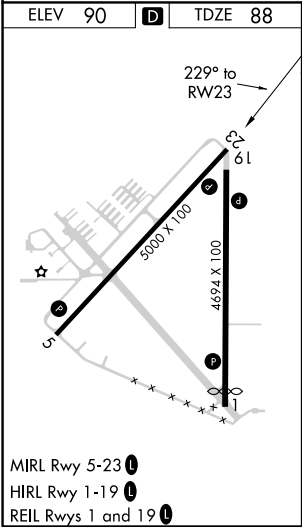
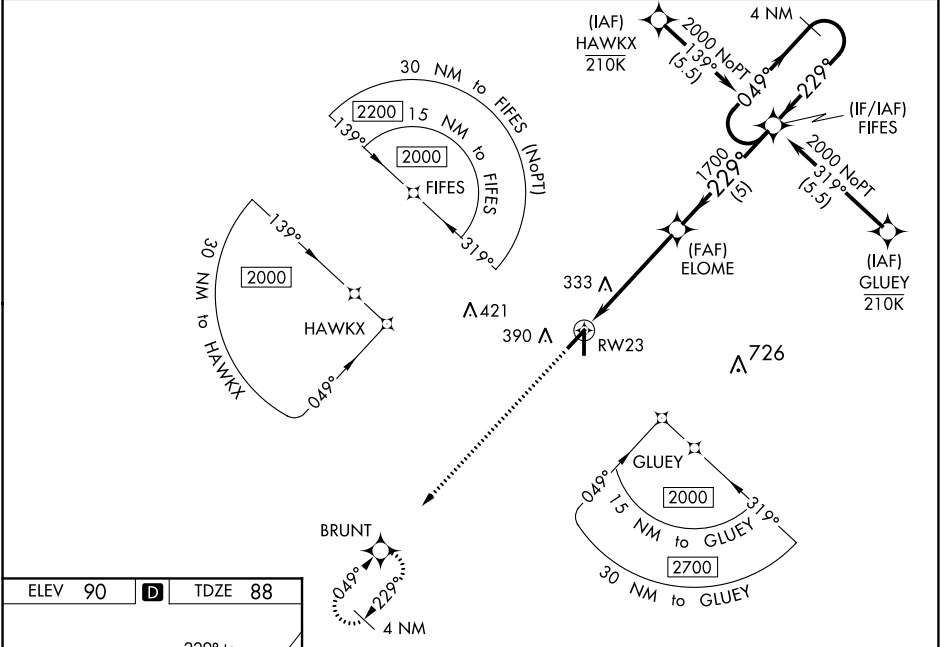



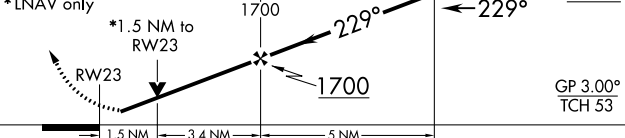

WAAS CH <b>45538</b> <b>W23A</b>	APP CRS <b>229°</b>	Rwy Idg TDZE <b>88</b> Apt Elev <b>90</b>
--	------------------------	---

RNAV (GPS) RWY 23  
ZEPHYRHILLS MUNI (ZPH)

RNP APCH.	Baro-VNAV and VDP NA when using Tampa Executive altimeter setting. For uncompensated Baro-VNAV systems, LNAV/VNAV NA below -15°C or above 54°C. Rwy 23 helicopter visibility reduction below ¾ SM NA. When local altimeter setting not received, use Tampa Executive altimeter setting and increase all DA 48 feet and all MDA 60 feet. Increase LPV and LNAV/VNAV all Cats, LNAV and Circling Cat C/D visibility ¼ mile.	MISSED APPROACH: Climb to 2000 direct BRUNT and hold.
-----------	---	--

AWOS-3PT <b>118.975</b>	TAMPA APP CON <b>119.9 290.3</b>	UNICOM <b>123.075 (CTAF)</b>
----------------------------	-------------------------------------	---------------------------------



2000 ↑	BRUNT 	VGSI and RNAV glidepath not coincident (VGSI Angle 3.61/TCH 41).	4 NM Holding Pattern	
*LNAV only		ELOME 1700	FIFES	
		049° → 2000 ← 229°	GP 3.00° TCH 53	
CATEGORY	A	B	C	D
LPV DA	377-1 289 (300-1 )			
LNAV/ VNAV DA	409-1 321 (400-1)			
LNAV MDA	600-1	512 (600-1)	600-1½ 512 (600-1½)	
 CIRCLING	740-1	650 (700-1)	740-1¾ 650 (700-1¾)	740-2 650 (700-2)

SE-3, 31 DEC 2020 to 28 JAN 2021

SE-3, 31 DEC 2020 to 28 JAN 2021