

WAAS CH <b>65899</b> <b>W11A</b>	APP CRS <b>114°</b>	Rwy Idg <b>3601</b> TDZE <b>6</b> Apt Elev <b>6</b>
--	------------------------	---

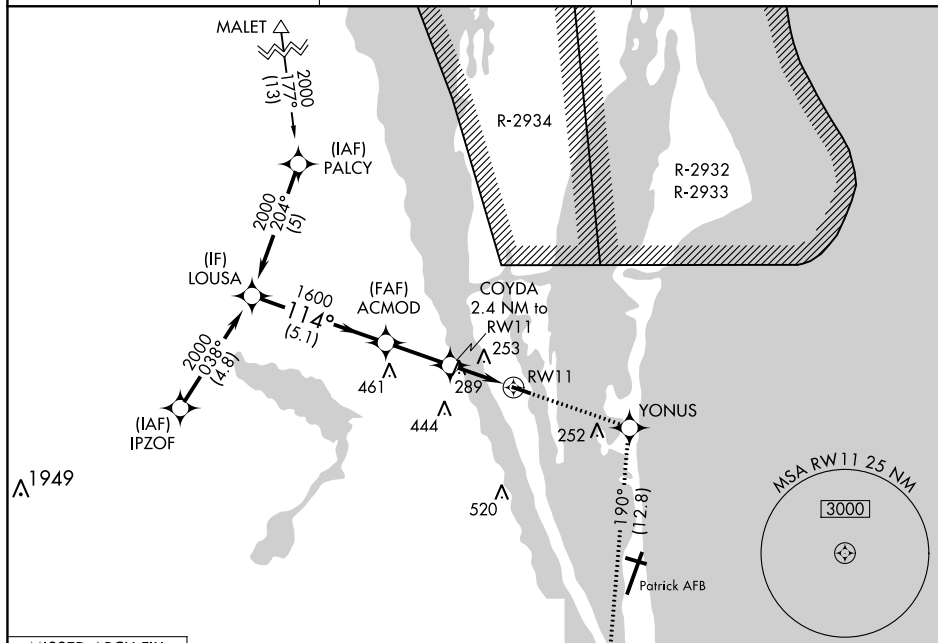
RNAV (GPS) RWY 11  
MERRITT ISLAND (COI)

RNP APCH.

**T** Rwy 11 helicopter visibility reduction below 1 SM NA. When local altimeter setting not received, use Melbourne altimeter setting and increase LPV DA to 329 and all MDA 40 feet, increase LPV all Cats visibility  $\frac{1}{8}$  mile. Night landing: Rwy 11 NA.

**MISSED APPROACH:** Climb to 3000 direct YONUS and on track 190° to MLB VOR/DME and hold.

AWOS-3 <b>119.025</b>	ORLANDO APP CON <b>134.95 281.425</b>	UNICOM <b>122.975 (CTAF) 0</b>
--------------------------	--	-----------------------------------



SE-3, 31 DEC 2020 to 28 JAN 2021

SE-3, 31 DEC 2020 to 28 JAN 2021

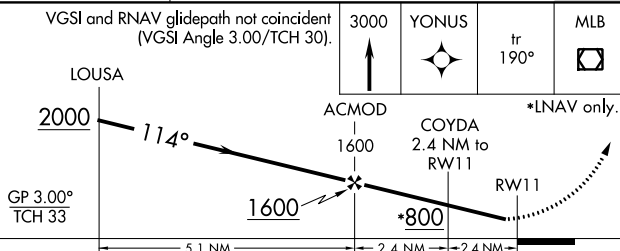
---

MISSED APCH FIX



Procedure NA for arrivals  
on MLB VORTAC airway  
radials 276 CW 329.

VGSI and RNAV glidepath not coincident  
(VGSI Angle 3.00/TCH 30).



CATEGORY	A	B	C	D
LPV DA	291-1	285 (300-1)		NA
LNAV MDA	600-1	594 (600-1)		NA
CIRCLING	600-1 594 (600-1)	620-1 614 (700-1)		NA

MIRL Rwy 11-29 **L**

MERRITT ISLAND, FLORIDA

Amdt 1D 30JAN20

28°20'N-80°41'W

MERRITT ISLAND (COI)

## RNAV (GPS) RWY 11