

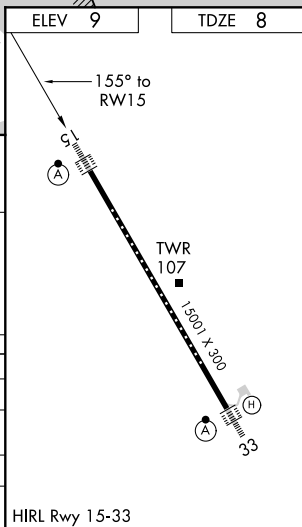
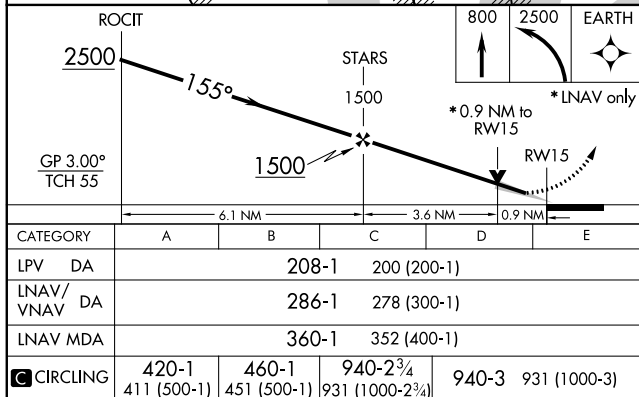
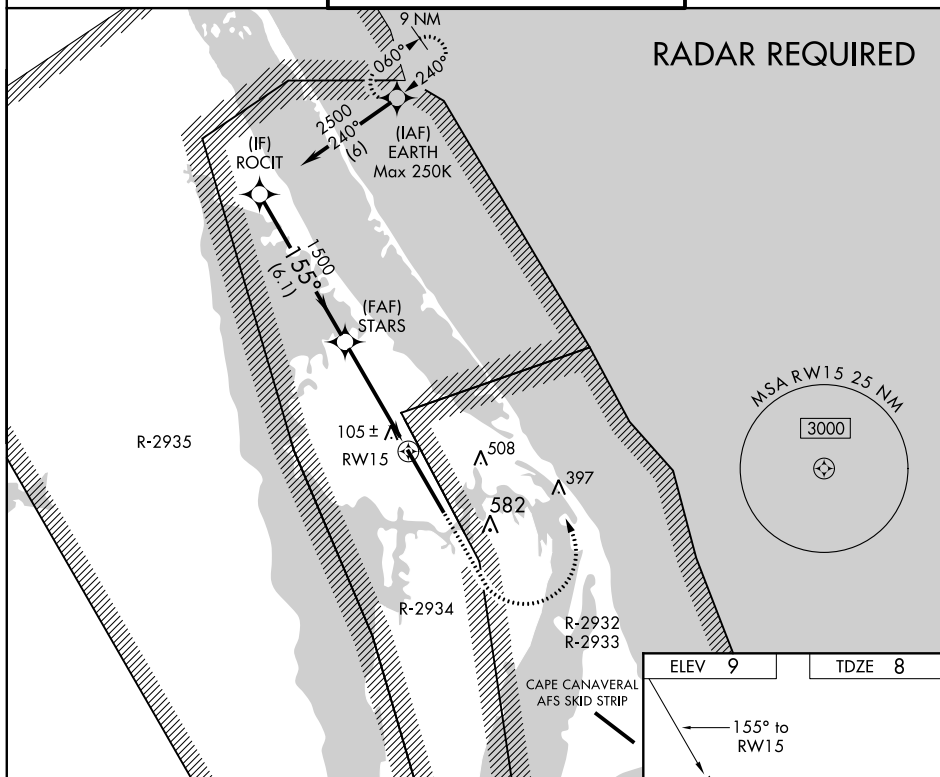
20310

RNAV (GPS) RWY 15
NASA SHUTTLE LANDING FACILITY (TTS)

MISSED APPROACH: Climb to 800, then climbing left turn to 2500 direct EARTH and hold.

NASA TOWER ★
128.55 (CTAF) 284.0

GND CON
121.75



NASA SHUTTLE LANDING FACILITY (TTS)
RNAV (GPS) RWY 15