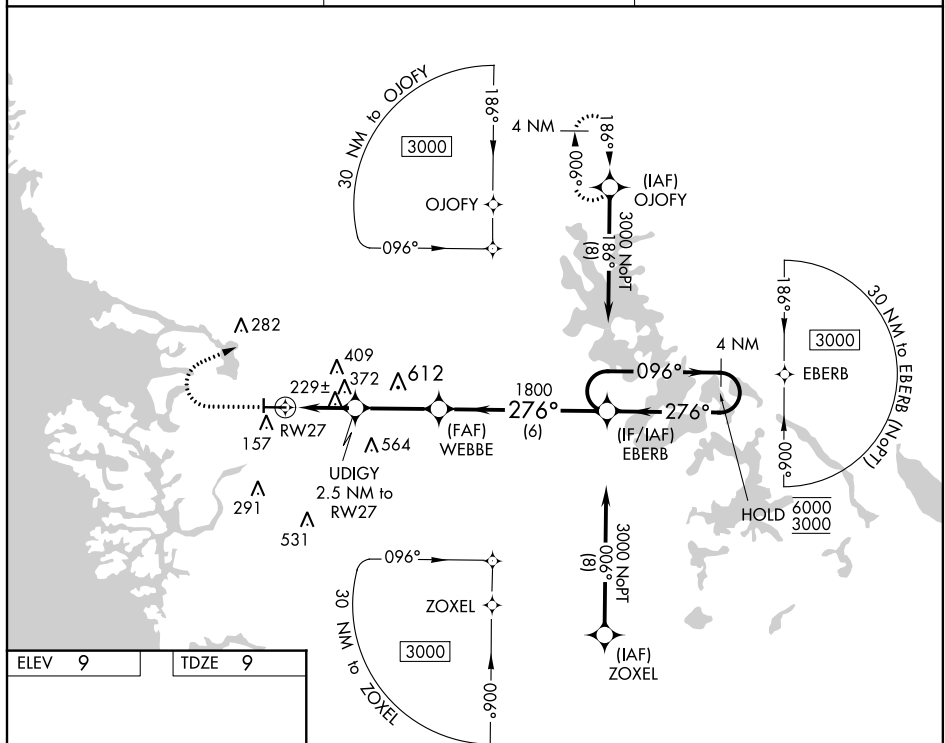


# RNAV (GPS) RWY 27

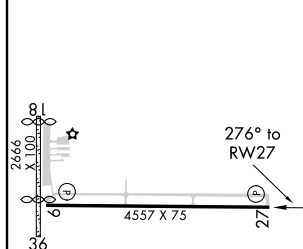
## CRYSTAL RIVER-CAPTAIN TOM DAVIS FIELD (CGC)

**MISSED APPROACH:** Climb to 700 then climbing right turn to 3000 direct OJOFY and hold.

UNICOM  
122.725 (CTAF) **L**



--	--



Visual Segment - Obstacles.

700 3000 OJOFY

UDIGY 2.5 NM to RW27

WEBBE

EBERB

4 NM Holding Pattern

096° 6000

276° 3000

27°

276°

820

1800

2.5 NM 3 NM 6 NM

CATEGORY	A	B	C	D
LP MDA	480-1	471 (500-1)	480-1 $\frac{3}{8}$	471 (500-1 $\frac{3}{8}$ )
LP NAV MDA	640-1	631 (700-1)	640-1 $\frac{3}{4}$	631 (700-1 $\frac{3}{4}$ )
CIRCLING	640-1	631 (700-1)	760-2 $\frac{1}{4}$ 751 (800-2 $\frac{1}{4}$ )	880-2 $\frac{3}{4}$ 871 (900-2 $\frac{3}{4}$ )