

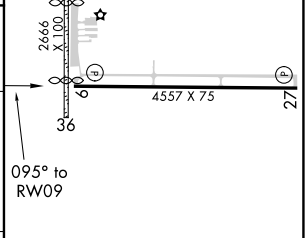
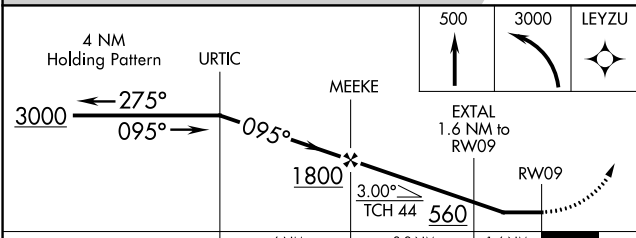
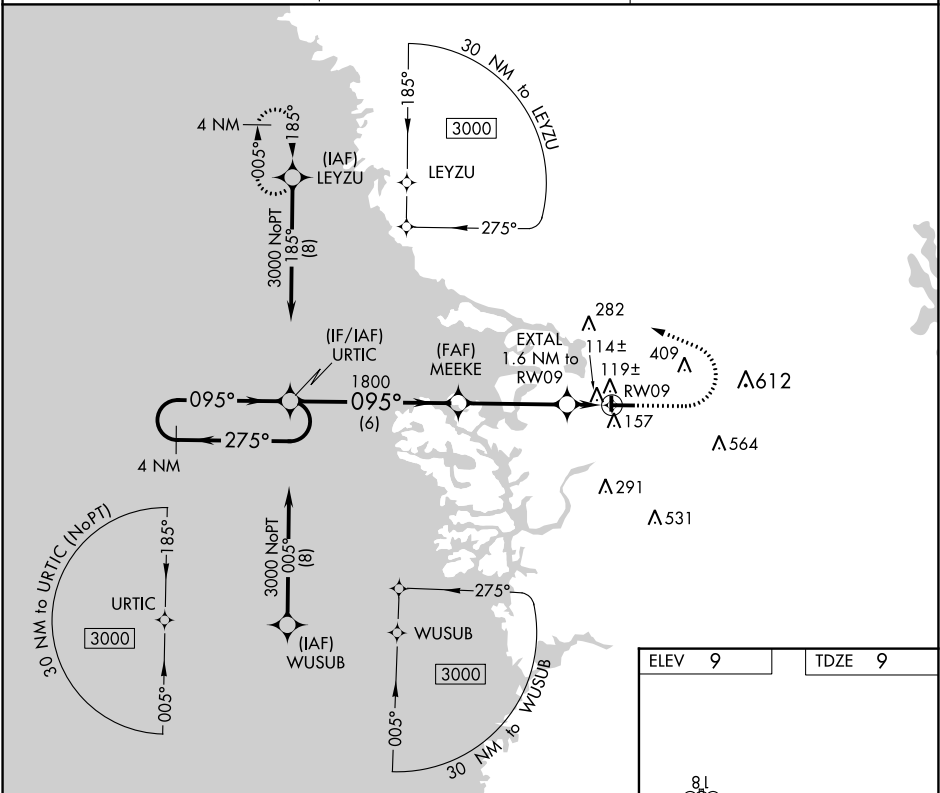
WAAS CH 45834 W09A	APP CRS 095°	Rwy Idg TDZE Apt Elev	4557 9 9
--	------------------------	-----------------------------	-------------------------------------

RNAV (GPS) RWY 9

CRYSTAL RIVER-CAPTAIN TOM DAVIS FIELD (CGC)

<p>▼ Procedure NA at night. DME/DME RNP-0.3 NA. When local altimeter setting not received, use Ocala altimeter setting and increase all MDA 80 feet; increase LP Cat C/D visibility 3/8 mile, LNAV Cat C/D visibility 1/4 mile and Circling Cat C/D visibility 1/4 mile. Helicopter visibility reduction below 1 SM NA.</p> <p>▲</p>	<p>MISSED APPROACH: Climb to 500 then climbing left turn to 3000 direct LEYZU and hold.</p>
--	--

AWOS-3 118.325	JACKSONVILLE APP CON 118.6 251.15	UNICOM 122.725 (CTAF) 0
--------------------------	---	-----------------------------------



CATEGORY	A	B	C	D
LP MDA	380-1	371 (400-1)		
LNAV MDA	420-1	411 (500-1)	420-1 1/8	411 (500-1 1/8)
CIRCLING	460-1 451 (500-1)	540-1 531 (600-1)	760-2 1/4 751 (800-2 1/4)	880-2 3/4 871 (900-2 3/4)

ELEV 9	TDZE 9
MIRL Rwy 9-27 0 REIL Rwy 9 and 27 0	

SE-3, 31 DEC 2020 to 28 JAN 2021

SE-3, 31 DEC 2020 to 28 JAN 2021