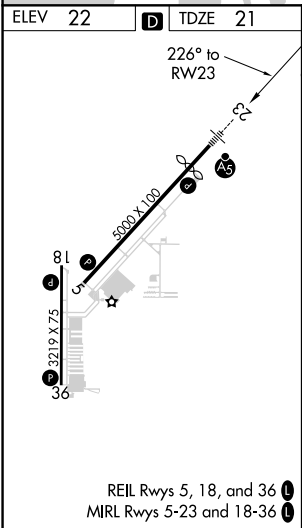
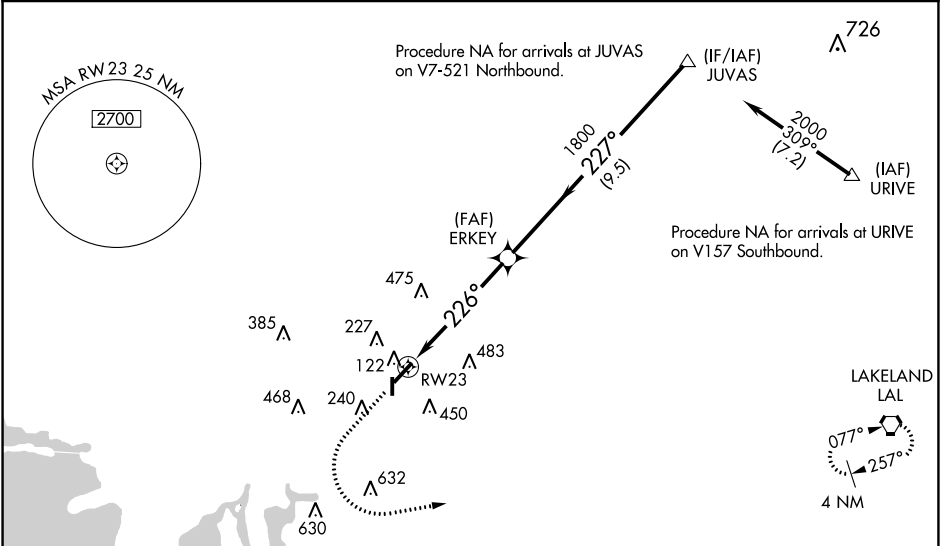


WAAS CH <b>78100</b> <b>W23A</b>	APP CRS <b>226°</b>	Rwy Idg <b>4200</b> TDZE <b>21</b> Apt Elev <b>22</b>
--	------------------------	---

RNAV (GPS) RWY 23  
TAMPA EXECUTIVE (VDF')

RNP APCH. Inop table does not apply to LPV and LNAV Cat A/B. Baro-VNAV NA when using Tampa Intl altimeter setting. For uncompensated Baro-VNAV systems, LNAV/VNAV NA below -15°C (5°F) or above 54°C (130°F). Rwy 23 helicopter visibility reduction below ¾ SM NA. When local altimeter setting not received, use Tampa Intl altimeter setting and increase LPV DA to 323 feet, LNAV/VNAV DA to 513; increase all MDAs 40 feet, and LNAV and Circling Cat C visibilities ¼ SM. Circling Rwy 18, 36 NA at night.	MALSR 	MISSED APPROACH: Climb to 800 then climbing left turn to 2700 direct to LAL VORTAC and hold.
---	-----------	---

AWOS-3 <b>121.125</b>	TAMPA APP CON <b>119.9 290.3</b>	UNICOM <b>122.7</b> (CTAF) <b>0</b>
--------------------------	-------------------------------------	--



800

↑

2700

↶

LAL

ERKEY

1800

JUVAS

1800

Procedure Turn

NA

GP 3.10°

TCH 40

RW23

↶

226°

227°

5.3 NM

9.5 NM

CATEGORY	A	B	C	D
LPV DA	298-1	277 (300-1)		NA
LNAV/ VNAV	488-1½	467 (500-1½)		NA
LNAV MDA	560-1	539 (600-1)		NA
CIRCLING	560-1 538 (600-1)	760-1 738 (800-1)	760-2 738 (800-2)	NA