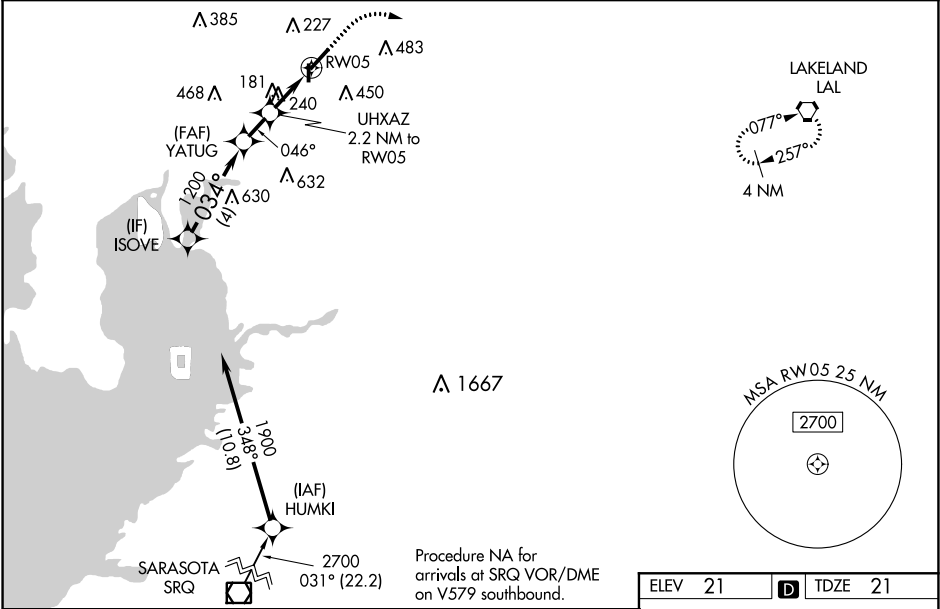


WAAS CH 97426 W05A	APP CRS 046°	Rwy Idg TDZE Apt Elev 21 21
--	------------------------	---

RNAV (GPS) RWY 5
TAMPA EXECUTIVE (VDF)

RNP APCH. ▼ Rwy 5 helicopter visibility reduction below ¾ SM NA. For uncompensated Baro-VNAV systems, LNAV/VNAV NA below 1°C (34°F) or above 54°C (130°F). When local altimeter setting not received, use Tampa Intl altimeter setting and increase LPV DA to 316 feet, LNAV/VNAV DA to 507 feet; increase all MDAs 40 feet and increase LNAV and Circling Cat C visibilities ¼ SM. Baro-VNAV and VDP NA when using Tampa Intl altimeter setting. Circling Rwy 18, 36 NA at night.	MISSED APPROACH: Climb to 600 then climbing right turn to 2000 direct LAL VORTAC and hold.
---	---

AWOS-3 121.125	TAMPA APP CON 119.9 290.3	UNICOM 122.7 (CTAF) ①
--------------------------	-------------------------------------	---------------------------------



VGSI and RNAV glidepath not coincident (VGSI Angle 3.02/TCH 45).		600	2000	LAL
		*LNAV only.		
CATEGORY	A	B	C	D
LPV DA	271-7/8 250 (300-7/8)		NA	
LNAV/VNAV DA	507-15/8 486 (500-15/8)		NA	
LNAV MDA	500-1	479 (500-1)	500-13/8 479 (500-13/8)	NA
CIRCLING	500-1 479 (500-1)	760-7/8 739 (800-7/8)	760-2 739 (800-2)	NA

SE-3, 31 DEC 2020 to 28 JAN 2021

SE-3, 31 DEC 2020 to 28 JAN 2021