

| | | |
|--|------------------------|---|
| WAAS CH 93916 W32A | APP CRS 321° | Rwy Idg 4001 TDZE 33 Apt Elev 33 |
|--|------------------------|---|

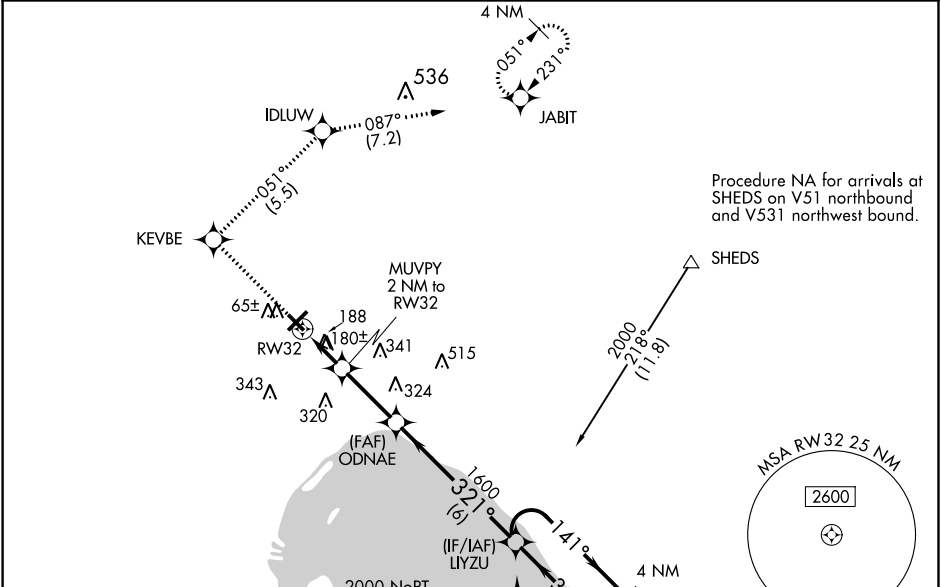
RNAV (GPS) RWY 32

OKEECHOBEE COUNTY (OBE)

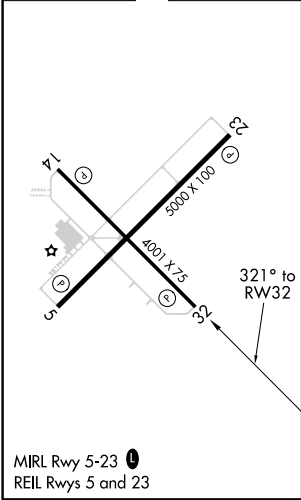
▲ Baro-VNAV NA when using Vero Beach altimeter setting. For uncompensated Baro-VNAV systems, LNAV/VNAV NA below -15°C (5°F) or above 48°C (118°F). Helicopter visibility reduction below 1 SM NA. DME/DME RNP-0.3 NA. Procedure NA at night. When local altimeter setting not received, use Vero Beach altimeter setting and increase all DA 77 feet and all MDA 80 feet; increase LPV all Cats, LNAV/VNAV all Cats, and LNAV Cat D visibility ¼ mile.

MISSED APPROACH: Climb to 2000 direct KEVBE and right turn on track 051° to IDLUW and on track 087° to JABIT and hold.

| | | |
|--------------------------|-------------------------------------|---------------------------------|
| AWOS-3 118.675 | MIAMI CENTER 132.25 370.9 | UNICOM 123.0 (CTAF) 0 |
|--------------------------|-------------------------------------|---------------------------------|



| | |
|----------------|----------------|
| ELEV 33 | TDZE 33 |
|----------------|----------------|



| | | | | | |
|--------------------|---------------------|-------|---------------------|-------|----------------------|
| 2000 KEVBE | tr 051° | IDLUW | tr 087° | JABIT | 4 NM Holding Pattern |
| *LNAV only. | | | | | LIYZU |
| RW32 | | | | | 2000 |
| MUVPY 2 NM to RW32 | | | | | 141° |
| ODNAE | | | | | 321° |
| 1600 | | | | | 1600 |
| *700 | | | | | GP 3.00° TCH 40 |
| 2 NM | | | | | 2.7 NM |
| 6 NM | | | | | |
| CATEGORY | A | B | C | D | |
| LPV DA | 283-1 250 (300-1) | | | | |
| LNAV/VNAV DA | 498-1¾ 465 (500-1¾) | | | | |
| LNAV MDA | 440-1 407 (500-1) | | 440-1¾ 407 (500-1¾) | | |
| CIRCLING | 500-1 467 (500-1) | | 500-1½ 467 (500-1½) | | 600-2 567 (600-2) |