

LOC/DME I-PUK 111.15 Chan 48 (Y)	APP CRS 162°	Rwy Idg TDZE 69 Apt Elev 69
--	------------------------	---

ILS or LOC RWY 16

NORTHWEST FLORIDA BEACHES INTL (E/C/P)

DME required for procedure entry. DME required.

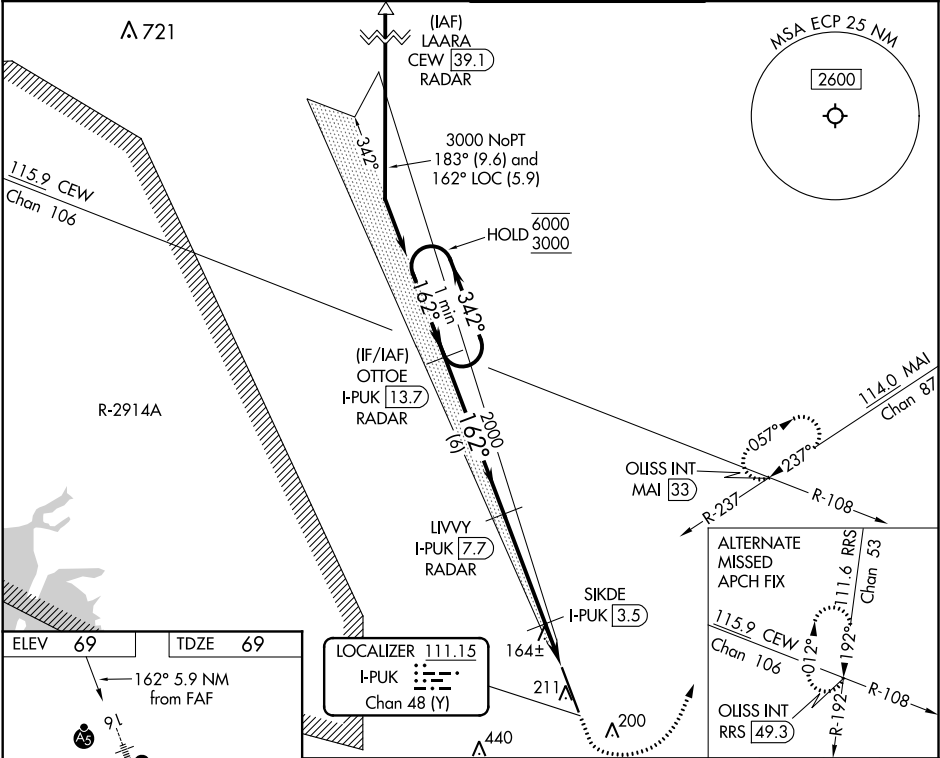
- ▼ For inop ALS, increase S-LOC 16 Cat C/D visibility to RVR 5500.
▲ #RVR 1800 authorized with use of FD or AP or HUD to DA.

MALSRL

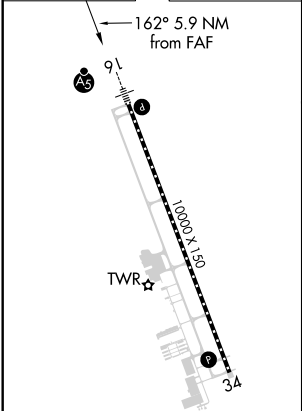


MISSED APPROACH: Climb to 600 then climbing left turn to 4000 on heading 025° and on MAI VORTAC R-237 to OLISS INT/MAI 33 DME and hold, continue climb-in-hold to 4000.

ATIS 119.975	TYNDALL APP CON★ 125.2 (N above 5000')	PANAMA CITY TOWER★ 118.95 (CTAF) 0	GND CON 121.65
------------------------	--	---	--------------------------



ELEV 69	TDZE 69
----------------	----------------



TDZ/CL Rwy 16
HIRL Rwy 16-34 **0**
REIL Rwy 34 **0**

One Minute Holding Pattern		OTTOE I-PUK 13.7 RADAR		LIVVY I-PUK 7.7 RADAR		SIKDE I-PUK 3.5		600 ↑		4000 hdg 025°		MAI R-237		OLISS INT		
6000 ← 342°		162° →		162° →		2000		* LOC only.								
GS 3.00° TCH 55				2000												
VGSI and ILS glidepath not coincident (VGSI Angle 3.00/TCH 66).																
		6 NM		4.2 NM		0.8 NM		0.9 NM								
CATEGORY	A		B		C		D									
S-ILS 16 #			269/24		200 (200-½)											
S-LOC 16			420/24		351 (400-½)											
CIRCLING	520-1		451 (500-1)		520-1½ 451 (500-1½)		620-2 551 (600-2)									

ILS or LOC RWY 16

SE-3, 31 DEC 2020 to 28 JAN 2021