


| | | |
|--|------------------------|--|
| WAAS CH 63017 W16A | APP CRS 162° | Rwy Idg 10000 TDZE 69 Apt Elev 69 |
|--|------------------------|--|

RNAV (GPS) RWY 16
NORTHWEST FLORIDA BEACHES INTL (ECP)

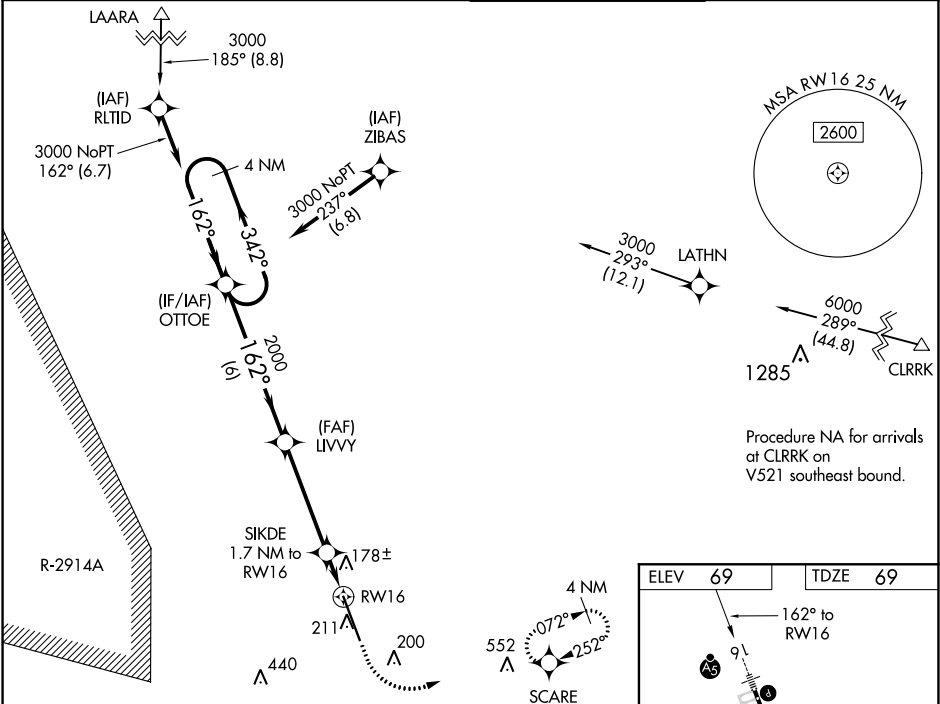
⚠ For uncompensated Baro-VNAV systems, LNAV/VNAV NA below -15°C (5°F) or above 54°C (130°F). DME/DME RNP-0.3 NA. When local altimeter setting not received, use Destin altimeter setting and increase all DA 88 feet, increase all MDA 100 feet, and increase LNAV/VNAV all Cats visibility and LNAV Cat C and D visibility 3/8 mile. Baro-VNAV and VDP NA when using Destin altimeter setting. For inop MALSR, increase LNAV Cat C and D visibility to 1 mile. For inop MALSR when using Destin altimeter setting, increase all LPV visibility to 3/8 mile, increase all LNAV/VNAV visibility to 1 3/8 mile, and increase LNAV Cat C and D visibility to 1 3/8 mile.

MALSR



MISSED APPROACH: Climb to 500 then climbing left turn to 4000 direct SCARE and hold, continue climb-in-hold to 4000.

| | | | |
|------------------------|--|---|--------------------------|
| ATIS 119.975 | TYNDALL APP CON★ 125.2 (N above 5000') | PANAMA CITY TOWER★ 118.95 (CTAF) 0 | GND CON 121.65 |
|------------------------|--|---|--------------------------|



| | | | | | | |
|----------------------|---------|--|-----------------|---------------|-------------|-------|
| 4 NM Holding Pattern | | VGSI and RNAV glidepath not coincident (VGSI Angle 3.00/TCH 66). | | 500 | 4000 | SCARE |
| 3000 ← 342° → 162° → | | OTTOE | LIVVY | SIKDE | *LNAV only. | |
| GP 3.00° TCH 55 | | 2000 | 1.7 NM to RW16 | 1 NM to RW16 | RW16 | |
| 6 NM | | 4.2 NM | 0.7 NM | 1 NM | | |
| CATEGORY | A | B | C | D | | |
| LPV DA | | 269-1/2 | 200 (200-1/2) | | | |
| LNAV/VNAV DA | | 478-7/8 | 409 (500-7/8) | | | |
| LNAV MDA | 440-1/2 | 371 (400-1/2) | 440-5/8 | 371 (400-5/8) | | |
| CIRCLING | 520-1 | 451 (500-1) | 520-1 1/2 | 620-2 | | |
| | | | 451 (500-1 1/2) | 551 (600-2) | | |

