

20310

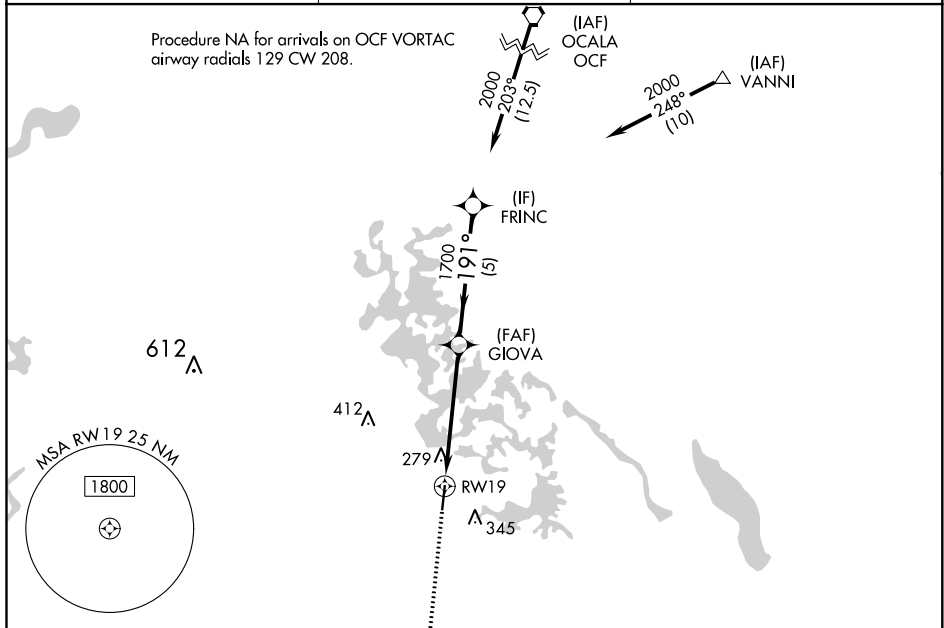
RNAV (GPS) RWY 19  
INVERNESS (INF)

TA

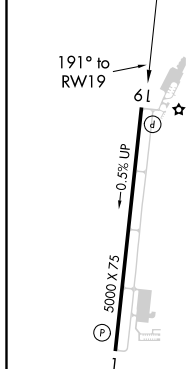
Rwy 19 helicopter visibility reduction below 1 SM NA.

**MISSED APPROACH:** Climb to 2000 direct BOWSK and on track 176° to REBEC and hold.

AWOS-3 <b>119.975</b>	JACKSONVILLE APP CON <b>118.6 251.15</b>	UNICOM <b>122.725 (CTAF) 0</b>
--------------------------	---	-----------------------------------



ELEV 65	TDZE 54
---------	---------



MIRL Rwy 1-19 **L**  
REIL Rwy 1 and 19 **L**

**BOWSK**

**MISSED APCH FIX**

**REBEC**

**FRINC**

**GIOVA**

**RW19**

**Visual Segment - Obstacles.**

**2000**

**1700**

**176°**

**191°**

**5.1 NM**

**5 NM**

**4 NM**

**176° (97)**

**61°**

**341°**

CATEGORY	A	B	C	D
LNAV MDA	580-1	526 (600-1)	580-1½ 526 (600-1½)	NA
CIRCLING	660-1	595 (600-1)	660-1½ 595 (600-1½)	NA

INVERNESS, FLORIDA  
Orig-B 16AUG18

28°48'N-82°19'W

INVERNESS (INF)  
RNAV (GPS) RWY 19

SE-3, 31 DEC 2020 to 28 JAN 2021