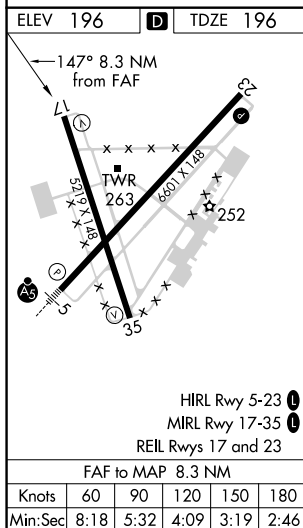
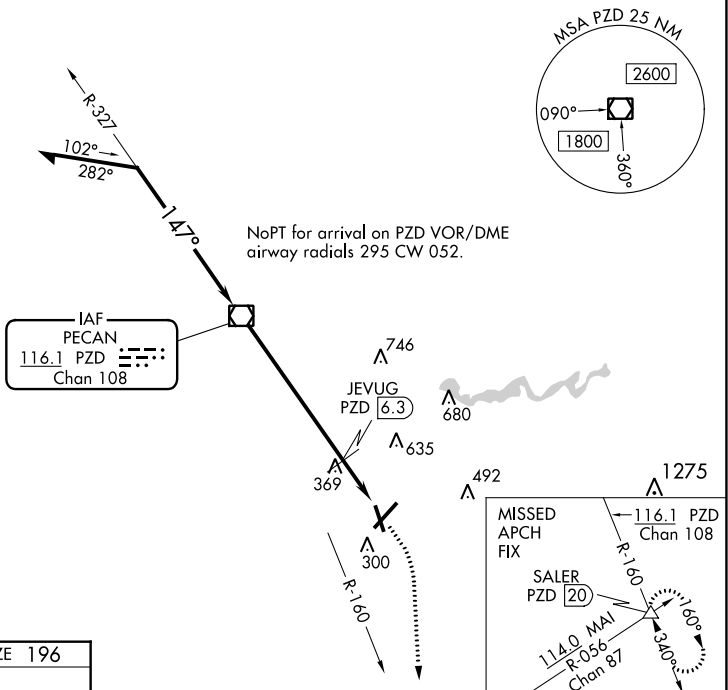


VOR RWY 17  
SOUTHWEST GEORGIA RGNL (ABY)

**MISSED APPROACH:** Climb to 1000 then climbing right turn to 3000 on heading 170° and PZD VOR/DME R-160 to SALER INT/20 DME and hold.

ATIS 133.05	JACKSONVILLE CENTER 125.75 226.8	ALBANY TOWER★ 120.25 (CTAF) 0336.4	GND CON 121.9 348.6	UNICOM 122.95
----------------	-------------------------------------	---------------------------------------	------------------------	------------------



VGSI and descent angles not coincident  
(VGSI Angle 3.00/TCH 52).

Remain within 10 NM

3.27°

1.47°

2000

2000

740

6.3 NM

2 NM

1000

3000

hdg 170°

PZD R-160

PZD 6.3

PZD 8.3

SALER

CATEGORY	A	B	C	D
S-17	740-1	544 (600-1)	740-1 $\frac{3}{8}$	544 (600-1 $\frac{3}{8}$ )
<b>C</b> CIRCLING	740-1	544 (600-1)	940-2 $\frac{1}{4}$ 744 (800-2 $\frac{1}{4}$ )	940-2 $\frac{1}{2}$ 744 (800-2 $\frac{1}{2}$ )
JEVUG FIX MINIMUMS				
S-17	640-1	444 (500-1)	640-1 $\frac{3}{8}$	444 (500-1 $\frac{3}{8}$ )
<b>C</b> CIRCLING	640-1 444 (500-1)	660-1 464 (500-1)	940-2 $\frac{1}{4}$ 744 (800-2 $\frac{1}{4}$ )	940-2 $\frac{1}{2}$ 744 (800-2 $\frac{1}{2}$ )

SE-4, 31 DEC 2020 to 28 JAN 2021

SE-4, 31 DEC 2020 to 28 JAN 2021