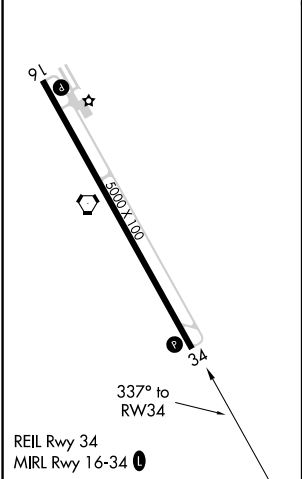
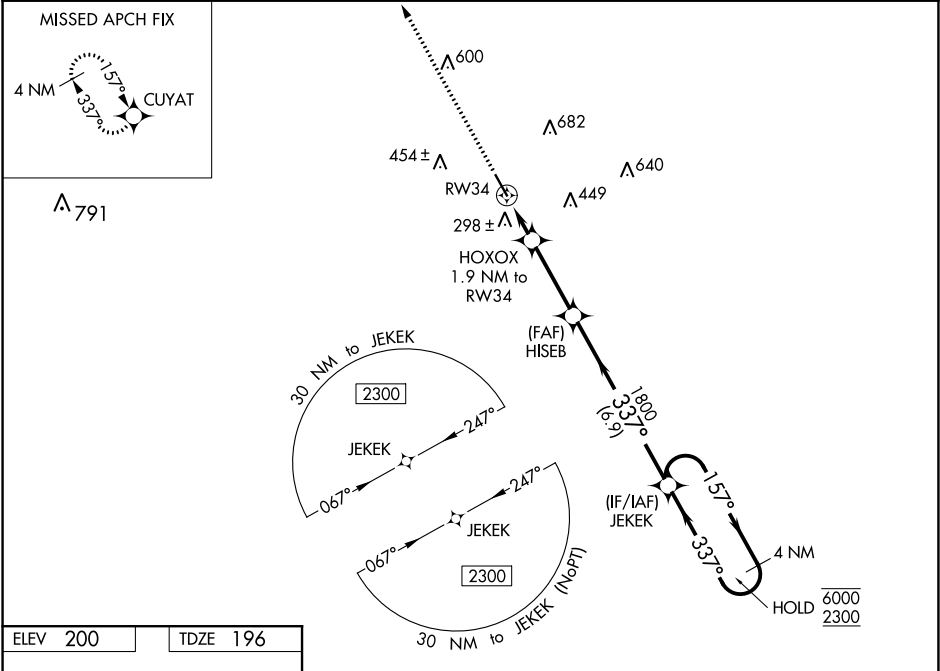


WAAS CH 70635 W34A	APP CRS 337°	Rwy Idg TDZE 196 Apt Elev 200
--	------------------------	---

RNAV (GPS) RWY 34
BACON COUNTY (AMG)

RNP APCH. ▼ Rwy 34 helicopter visibility reduction below ¾ SM NA. ▲ For uncompensated Baro-VNAV systems, LNAV/VNAV NA below -4°C or above 54°C.	MISSED APPROACH: Climb to 2300 direct CUYAT and hold.
---	---

ASOS 118.325	JACKSONVILLE CENTER 127.575 269.025	UNICOM 122.7 (CTAF) 0
------------------------	---	---------------------------------



2300	CUYAT	VGSI and RNAV glidepath not coincident (VGSI Angle 3.00°/TCH 30°).			
*LNAV only		HOXOX 1.9 NM to RW34	HISEB 1800	JEKEK	4 NM Holding Pattern
		1.1 NM to RW34	820	1800	GP 3.00° TCH 40
		1.1	0.8	3.1 NM	6.9 NM
CATEGORY	A	B	C	D	
LPV DA	452-¾		256 (300-¾)		
LNAV/VNAV DA	459-⅞		263 (300-⅞)		
LNAV MDA	560-1		364 (400-1)		
CIRCLING	720-1	520 (600-1)	1000-2¼ 800 (800-2¼)	1000-2½ 800 (800-2½)	