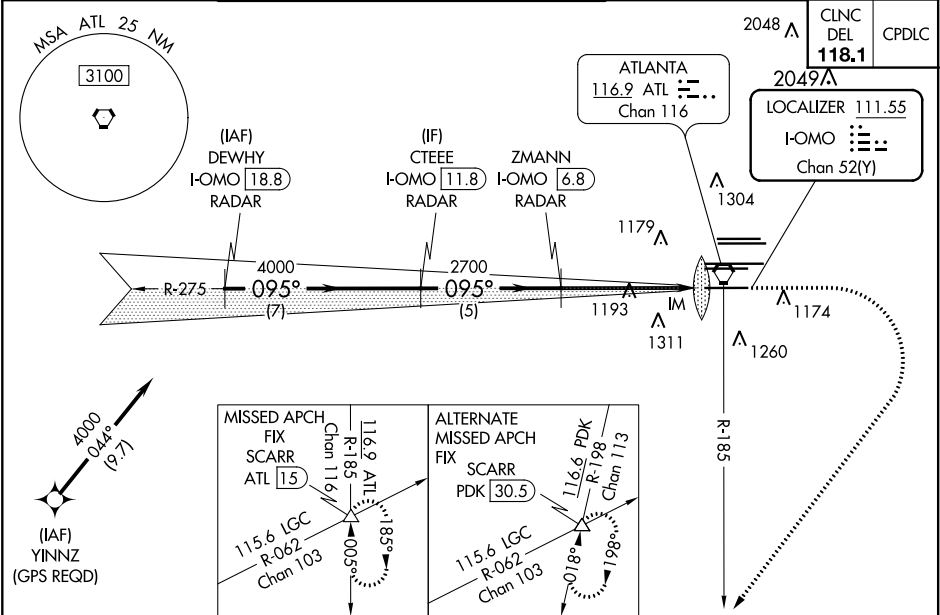


LOC/DME I-OMO <b>111.55</b> Chan <b>52 (Y)</b>	APP CRS <b>095°</b>	Rwy Idg TDZE <b>1000</b> Apt Elev <b>1026</b>
--	------------------------	---

ILS RWY 10 (CAT II & III)  
HARTSFIELD-JACKSON ATLANTA INTL (ATL)

Simultaneous approach authorized with Rwy 9L or 8R or 8L, or Rwy 9L and 8L. DME or Radar required. Localizer not suitable for electronic rollout guidance.	ALSIF-2 	MISSED APPROACH: Climb to 1400 then climbing right turn to 3000 on ATL VORTAC R-185 to SCARR INT/ATL 15 DME and hold.
--	-------------	---

D-ATIS ARR <b>119.65</b> DEP <b>125.55</b>	ATLANTA APP CON <b>127.9 379.9</b>	ATLANTA TOWER 8L-26R 8R-26L 9L-27R 9R-27L 10-28 RWYS <b>119.1 125.325 123.85 119.3 119.5 254.4</b>	ALL RWYS <b>121.9</b>	GND CON (8L-26R,8R-26L) (9L-27R,9R-27L) 10-28 RWYS <b>121.75 121.65 254.4</b>
--	--	--	-----------------------------	---



DEWHY I-OMO [18.8] RADAR	CTEE I-OMO [11.8] RADAR	ZMANN I-OMO [6.8] RADAR	IM	ELEV <b>1026</b> <b>D</b> TDZE <b>1000</b>
4000	4000	2700	1100	
GS 3.00° TCH 55				
7 NM	5 NM	5.2 NM	11.49 NM	
CATEGORY	A	B	C	D
S-ILS 10	CAT II	RA 180/12	100 DA 1100	
S-ILS 10		CAT IIIa	RVR 07	
S-ILS 10		CAT IIIb	NA	
S-ILS 10		CAT IIIc	NA	
CATEGORY II & III ILS - SPECIAL AIRCREW & AIRCRAFT CERTIFICATION REQUIRED				
HIRT all Rwys TDZ/CL Rwy 8L, 9R, 10, 26R, 27L and 28				