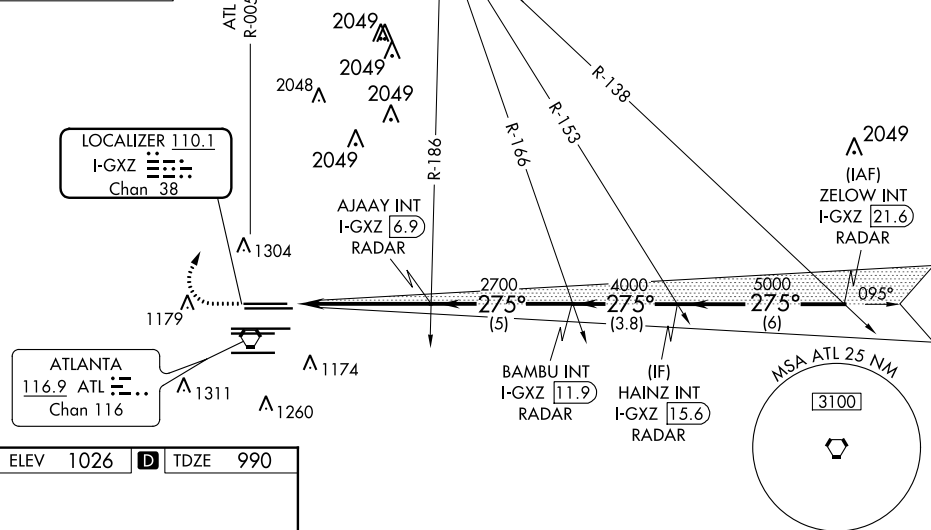


ILS RWY 26R (SA CAT I & II)
HARTSFIELD-JACKSON ATLANTA INTL (ATL)

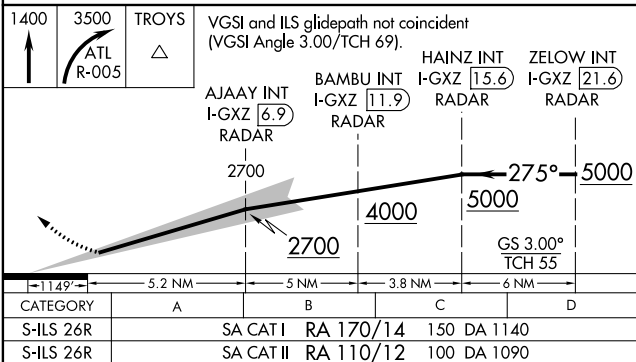
MISSED APPROACH: Climb to 1400 then climbing right turn to 3500 on ATL VORTAC R-005 to TROYS INT/ATL 15 DME and hold.

CLNC DEL 118.1	CPDLC
-----------------------------	-------

RADAR REQUIRED



HIRL all Rwy's
TDZ/CL Rwy's 8L,
26R, 27L and 28



SA CATEGORY I & II ILS - SPECIAL AIRCREW
& AIRCRAFT CERTIFICATION REQUIRED