

| | | | | |
|--|------------------------|--|--|--|
| LOC/DME I-PKU 111.75 Chan 54 (Y) | APP CRS 275° | Rwy Idg TDZE 998 Apt Elev 1026 | ILS RWY 28 (CAT II) HARTSFIELD-JACKSON ATLANTA INTL (ATL) | |
|--|------------------------|--|--|--|

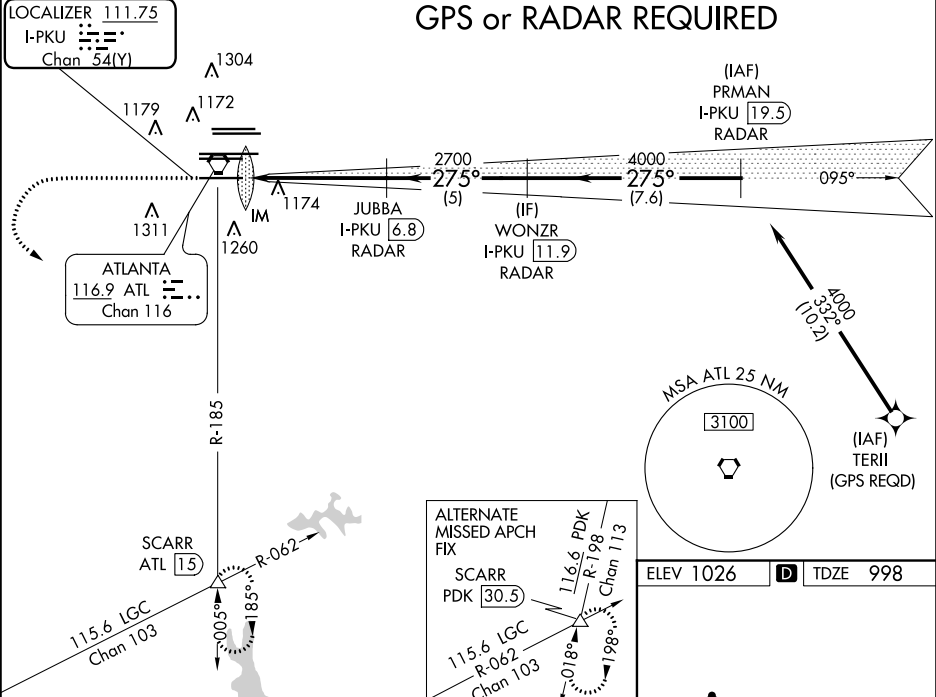
Simultaneous approach authorized with Rwy 26R or 26L or 27R,
or Rwys 26R and 27R.
DME or Radar Required.

ALSIF-2

MISSED APPROACH: Climb to 1400
then climbing left turn to 3000 on
ATL VORTAC R-185 to SCARR INT/
ATL 15 DME and hold.

| | | | | | | | | |
|--|--|--|--|--|--|--|---|-------------|
| D-ATIS ARR 119.65 DEP 125.55 | ATLANTA APP CON 127.9 379.9 | ATLANTA TOWER ALL 8L-26R 8R-26L 9L-27R 9R-27L 10-28 RWYS (8L-26R,8R-26L) (9L-27R,9R-27L) 10-28 RWYS 119.1 125.325 123.85 119.3 119.5 254.4 121.9 121.75 121.65 254.4 | | | | | GND CON 121.9 121.75 121.65 254.4 | ALL RWYS |
|--|--|--|--|--|--|--|---|-------------|

| | | | | | |
|---|--|-----------------------|--|-----------------------------|-------|
| LOCALIZER 111.75 I-PKU Chan 54(Y) | | GPS or RADAR REQUIRED | | CLNC DEL 118.1 | CPDLC |
|---|--|-----------------------|--|-----------------------------|-------|



1400
↑
ATL R-185

3000
↑
ATL R-185

SCARR
△

WONZR I-PKU [11.9] RADAR

PRMAN I-PKU [19.5] RADAR

JUBBA I-PKU [6.8] RADAR

IM

2700

4000

275°

4000

GS 3.00°
TCH 57

1100'

5.2 NM

5 NM

7.6 NM

CATEGORY

A

B

C

D

S-ILS 28

RA 188/12 100 DA 1098

CATEGORY II ILS - SPECIAL AIRCREW
& AIRCRAFT CERTIFICATION REQUIRED

HIRL all Rwys
TDZ/CL Rwys 8L, 9R,
10, 26R, 27L and 28