

LOC/DME I-PKU 111.75 Chan 54 (Y)	APP CRS 275°	Rwy Idg TDZE 998 Apt Elev 1026	ILS RWY 28 (SA CAT I) HARTSFIELD-JACKSON ATLANTA INTL (ATL)
--	------------------------	--	---

Simultaneous approach authorized with Rwy 26R or 26L or 27R, or Rwys 26R and 27R.
DME or Radar Required.
Requires specific OPSPEC, MSPEC or LOA approval and use of HUD to DH.

ALSIF-2

MISSED APPROACH: Climb to 1400 then climbing left turn to 3000 on ATL VORTAC R-185 to SCARR INT/ ATL 15 DME and hold.

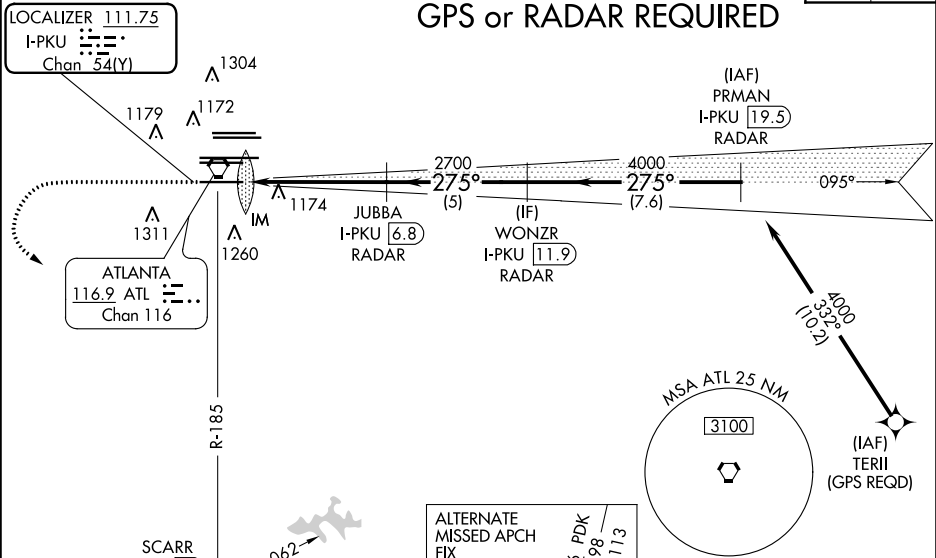
D-ATIS ARR 119.65 DEP 125.55	ATLANTA APP CON 127.9 379.9	ATLANTA TOWER 8L-26R 8R-26L 9L-27R 9R-27L 10-28 RWYS 119.1 125.325 123.85 119.3 119.5 254.4	ALL RWYS 121.9 121.75 121.65 254.4	GND CON 10-28 RWYS	ALL RWYS
--	--	--	---	-----------------------	-------------

Δ 2049
Δ 2049

LOCALIZER 111.75
I-PKU
Chan 54(Y)

CLNC DEL
118.1

CPDLC



ELEV 1026	D TDZE 998
-----------	-------------------

1400 3000 SCARR
ATL R-185

WONZR I-PKU [11.9] RADAR
PRMAN I-PKU [19.5] RADAR

JUBBA I-PKU [6.8] RADAR

IM 2700 4000 275° 4000

GS 3.00° TCH 57

1100' 5.2 NM 5 NM 7.6 NM

CATEGORY A B C D

S-ILS 28 RA 264/14 150 DA 1148

SA CATEGORY I ILS - SPECIAL AIRCREW & AIRCRAFT CERTIFICATION REQUIRED

HRL all Rwys
TDZ/CL Rwys 8L, 9R,
10, 26R, 27L and 28