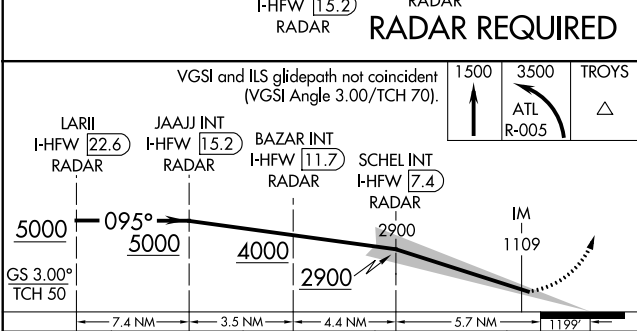
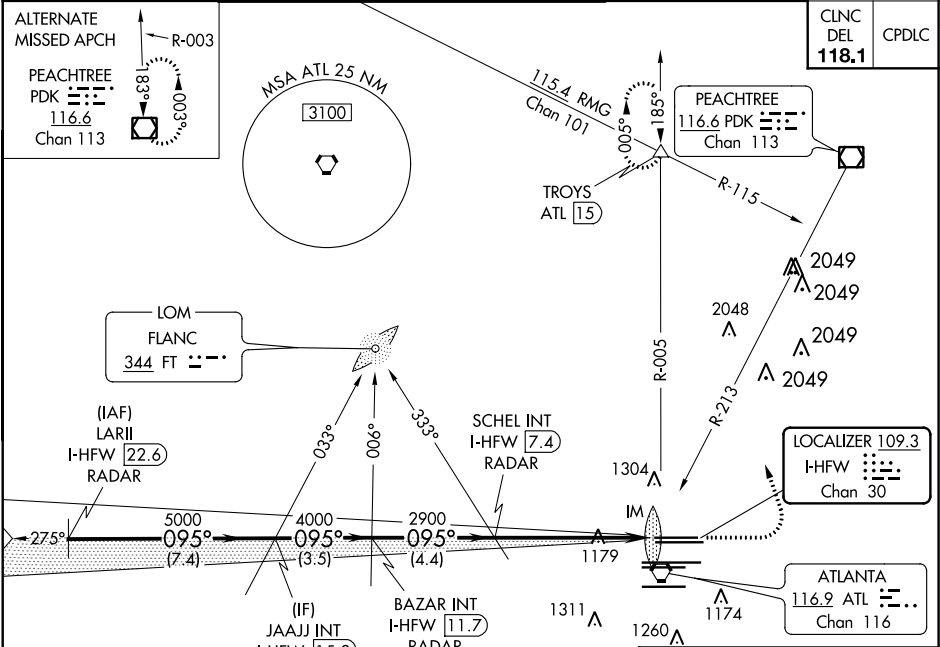


LOC/DME I-HFW 109.3 Chan 30	APP CRS 095°	Rwy Idg TDZE Apt Elev	8800 1015 1026
---	------------------------	-----------------------------	---

ILS RWY 8L (CAT II & III)
HARTSFIELD-JACKSON ATLANTA INTL (ATL)

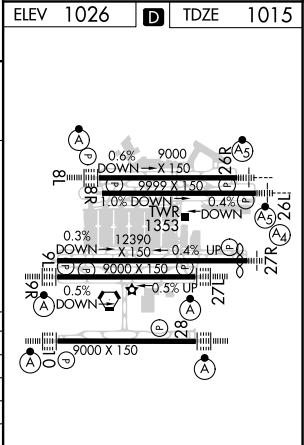
Simultaneous approach authorized with Rwy 9L or 9R or 10, or Rwy 9L and 10. ADF or DME or RADAR required.	ALSIF-2 	MISSED APPROACH: Climb to 1500 then climbing left turn to 3500 on ATL VORTAC R-005 to TROYS INT/ATL 1.5 DME and hold.
--	-------------	---

D-ATIS ARR 119.65 DEP 125.55	ATLANTA APP CON 127.9 379.9	ATLANTA TOWER 8L-26R 8R-26L 9L-27R 9R-27L 10-28 RWYS 119.1 125.325 123.85 119.3 119.5 254.4	ALL RWYS 121.9	GND CON (8L-26R, 8R-26L) (9L-27R, 9R-27L) 10-28 121.75 121.65 254.4	ALL RWYS 254.4
--	--	--	-----------------------------	--	-----------------------------



CATEGORY	A	B	C	D
S-ILS 8L	CAT II	RA 105/12	100 DA 1115	
S-ILS 8L		CAT IIIa	RVR 07	
S-ILS 8L		CAT IIIb	RVR 06	
S-ILS 8L		CAT IIIc	NA	

CATEGORY II & III ILS - SPECIAL AIRCREW & AIRCRAFT CERTIFICATION REQUIRED



SE-4, 31 DEC 2020 to 28 JAN 2021

SE-4, 31 DEC 2020 to 28 JAN 2021