


ILS or LOC RWY 26R  
HARTSFIELD-JACKSON ATLANTA INTL (ATL)


Inop table does not apply to sidestep Rwy 26L.  
Simultaneous approach authorized with Rwy  
27R or 27L or 28, or Rwy 27R and 28.

Rwy 26L  
MALSR

**MISSED APPROACH:** Climb to 1400 then climbing right turn to 3500 on ATL VORTAC R-005 to TROYS INT/ATL 15 DME and hold.

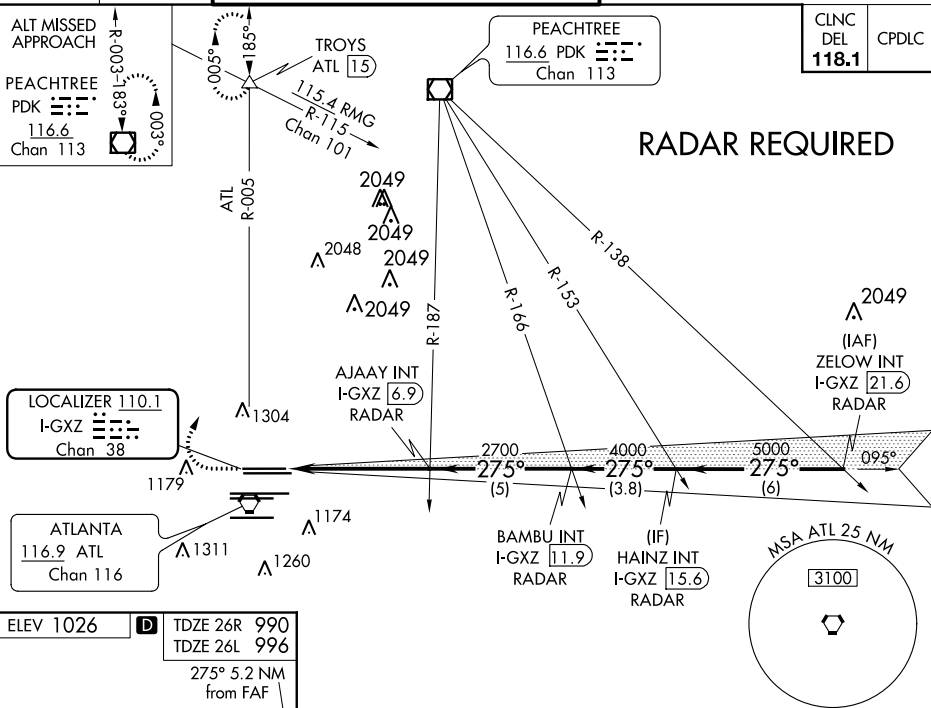
D-ATIS	ATLANTA APP CON	ATLANTA TOWER						ALL RWYS	GND CON			ALL RWYS
ARR <b>119.65</b>		8L-26R	8R-26L	9L-27R	9R-27L	10-28			(8L-26R,8R-26L)	(9L-27R,9R-27L)	10-28	
DEP <b>125.55</b>	<b>127.9</b>	<b>379.9</b>	<b>119.1</b>	<b>125.325</b>	<b>123.85</b>	<b>119.3</b>	<b>119.5</b>	<b>254.4</b>	<b>121.9</b>	<b>121.75</b>	<b>121.65</b>	<b>254.4</b>

ALT MISSED  
APPROACH  
PEACHTREE  
PDK   
116.6  
Chan 113

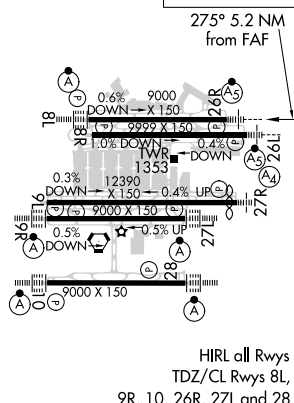
PEACHTREE  
116.6 PDK   
Chan 113

CLNC DEL <b>118.1</b>	CPDLC
-----------------------------	-------

## RADAR REQUIRED



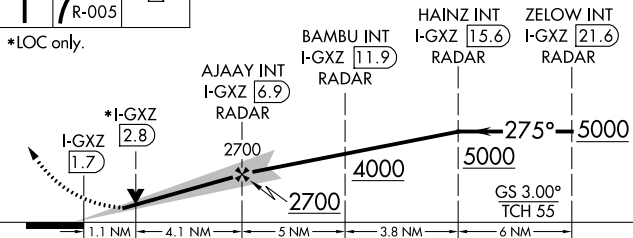
ELEV 1026	<b>D</b>	TDZE 26R 990 TDZE 26L 996
-----------	----------	------------------------------



1400 ↑	3500 ↗ ATL R-005	TROYS △
-----------	---------------------------	------------

VGSI and ILS glidepath not coincident (VGSI Angle 3.00/TCH 69).

\*LOC only.



TDZ/CL Rwys 8L, 9R, 10, 26R, 27L and 28						CATEGORY	A	B	C	D
						S-ILS 26R	1190/18		200 (200-½)	
FAF to MAP 5.2 NM						S-LOC 26R	1420/24	430 (400-½)	1420/40	430 (400-¾)
Knots	60	90	120	150	180	SIDESTEP 26L	1420/1¼	424 (400-1¼)	1420-1¾	424 (400-1¾)
Min:Sec	5:12	3:28	2:36	2:05	1:44					

SE-4, 31 DEC 2020 to 28 JAN 2021