

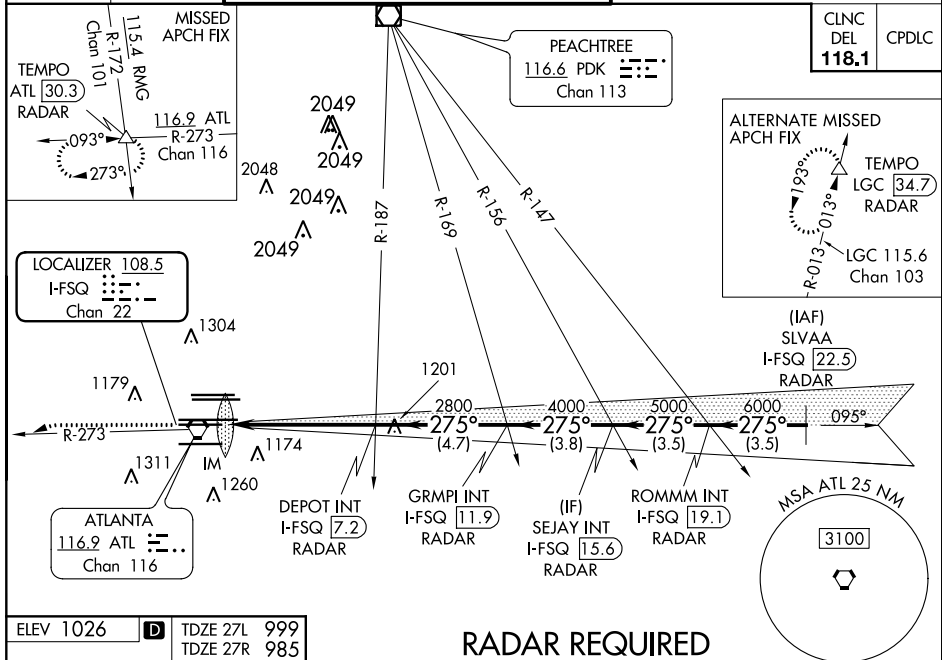
LOC/DME I-FSQ	APP CRS	Rwy Idg	27L	27R
<b>108.5</b>	<b>275°</b>	<b>8865</b>	<b>11690</b>	
Chan <b>22</b>		TDZE	<b>999</b>	<b>985</b>
		Apt Elev	<b>1026</b>	<b>1026</b>

# ILS or LOC RWY 27L

## HARTSFIELD-JACKSON ATLANTA INTL (ATL)

▼	Inop table does not apply to Sidestep Rwy 27R. Simultaneous approach authorized with Rwy 26R or 26L.	Rwy 27L ALSF-2	Rwy 27R MAIS	MISSED APPROACH: Climb to 1400 then climbing left turn to 4000 on ATL VORTAC R-273 to TEMPO INT/ATL 30.3 DME/RADAR and hold.

D-ATIS	ATLANTA APP CON	ATLANTA TOWER	ALL	GND CON	ALL
ARR <b>119.65</b>		8L-26R 8R-26L 9L-27R 9R-27L 10-28 RWYS		(8L-26R, 8R-26L) (9L-27R, 9R-27L) 10-28 RWYS	
DEP <b>125.55</b>	<b>127.9 379.9</b>	<b>119.1 125.325 123.85 119.3 119.5 254.4</b>	<b>121.9</b>	<b>121.75 121.65 254.4</b>	



## RADAR REQUIRED

ELEV 1026	TDZE 27L 999 TDZE 27R 985	<div> </div> VGSI and ILS glidepath not coincident (VGSI Angle 3.00/TCH 79).			
		<div> </div> *LOC only.			
HIRL all Rwy TDZ/CL Rwy 8L, 9R, 10, 26R, 27L and 28 FAF to MAP 5.5 NM		<div> </div>			
FAF to MAP 5.5 NM		<div> </div>			
Knots Min:Sec 5:30 3:40 2:45 2:12 1:50		<div> </div>			