

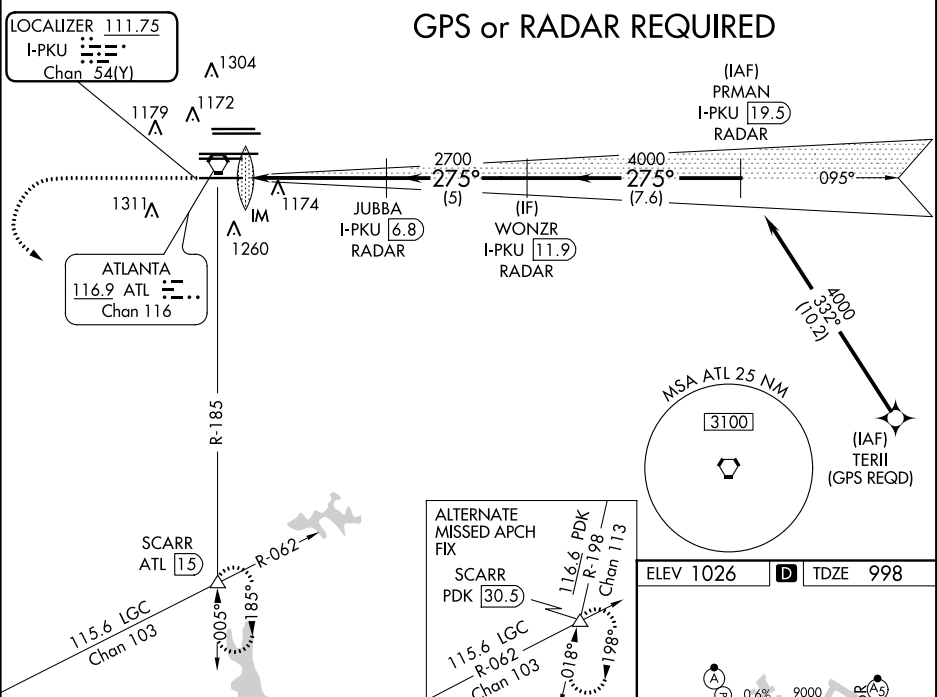
LOC/DME I-PKU <b>111.75</b> Chan <b>54 (Y)</b>	APP CRS <b>275°</b>	Rwy Idg TDZE Apt Elev <b>9000</b> <b>998</b> <b>1026</b>
--	------------------------	---

ILS or LOC RWY 28  
HARTSFIELD-JACKSON ATLANTA INTL (ATL)

Simultaneous approach authorized with Rwy 26R or 26L or 27R, or Rwys 26R and 27R. DME or Radar Required.		ALSIF-2 	MISSED APPROACH: Climb to 1400 then climbing left turn to 3000 on ATL VORTAC R-185 to SCARR INT/ ATL 15 DME and hold.
--	--	-------------	--

D-ATIS ARR <b>119.65</b> DEP <b>125.55</b>	ATLANTA APP CON <b>127.9 379.9</b>	ATLANTA TOWER 8L-26R 8R-26L 9L-27R 9R-27L 10-28 RWYS <b>119.1 125.325 123.85 119.3 119.5 254.4</b>	ALL RWYS <b>121.9 121.75 121.65 254.4</b>	GND CON 10-28 RWYS	ALL RWYS
--	--	--	---	-----------------------	-------------

Δ 2049 Δ 2049		CLNC DEL <b>118.1</b>	CPDLC
------------------	--	-----------------------------	-------



1400 ↑ ATL R-185	3000 ↑ ATL R-185	SCARR △	JUBBA I-PKU [6.8] RADAR	WONZR I-PKU [11.9] RADAR	PRMAN I-PKU [19.5] RADAR
*LOC only. I-PKU [1.7]	*I-PKU [3]	2700	2700	275°	4000
0.1	1.2 NM	3.9 NM	5 NM	7.6 NM	GS 3.00° TCH 57
CATEGORY	A	B	C	D	
S-ILS 28	1198/18		200 (200-1/2)		
S-LOC 28	1480/24	482 (500-1/2)	1480/50	482 (500-1)	

ATLANTA, GEORGIA Amdt 4 18SEP14	HARTSFIELD-JACKSON ATLANTA INTL (ATL) 33°38'N-84°26'W	ILS or LOC RWY 28
------------------------------------	--	-------------------

SE-4, 31 DEC 2020 to 28 JAN 2021

SE-4, 31 DEC 2020 to 28 JAN 2021