

LOC/DME I-HFW 109.3 Chan 30	APP CRS 095°	Rwy Idg	8L	8R
		TDZE	1015	1024
		Apt Elev	1026	1026

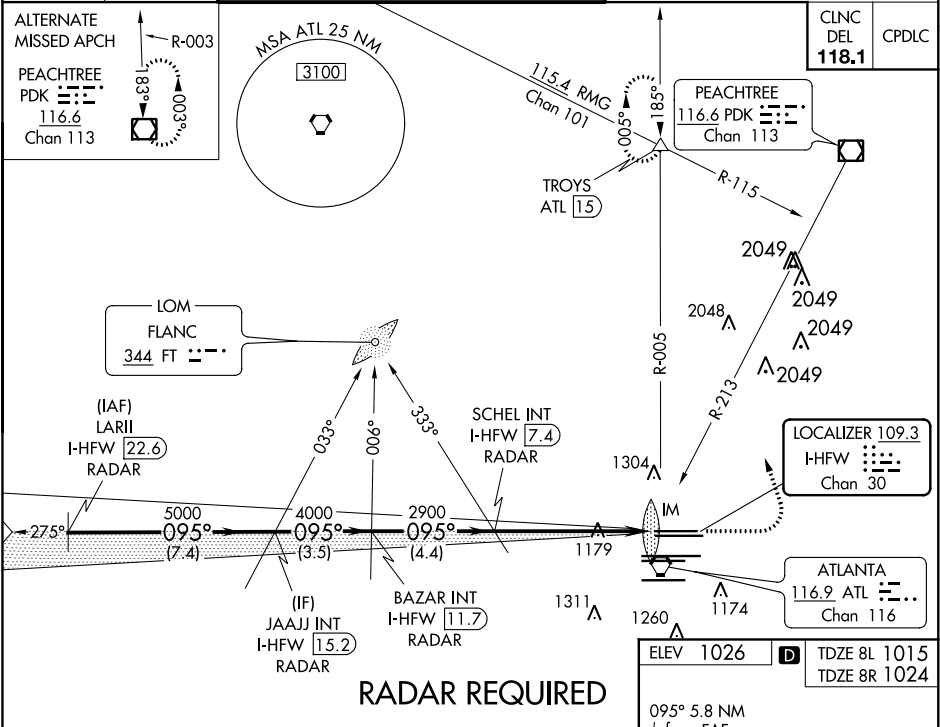
ILS or LOC RWY 8L
HARTSFIELD-JACKSON ATLANTA INTL (ATL)

▼ Inop table does not apply to Sidestep 8R.
Simultaneous approach authorized with Rwy 9L or 9R or 10, or Rwy 9L and 10. ADF or DME or RADAR required.

Rwy 8L
ALS-F-2

MISSED APPROACH: Climb to 1500 then climbing left turn to 3500 on ATL VORTAC R-005 to TROYS INT/ATL 15 DME and hold.

D-ATIS ARR 119.65 DEP 125.55	ATLANTA APP CON 127.9 379.9	ATLANTA TOWER 8L-26R 8R-26L 9L-27R 9R-27L 10-28 RWYS 119.1 125.325 123.85 119.3 119.5 254.4				ALL RWYS 254.4	GND CON [8L-26R, 8R-26L] [9L-27R, 9R-27L] 10-28 121.75 121.65 254.4	ALL RWYS 254.4
--	--	--	--	--	--	-----------------------------	--	-----------------------------



VGSI and ILS glidepath not coincident (VGSI Angle 3.00/TCH 70).				
*LOC only.				
5000 095° 5000 4000 2900 2900 2700 1600 1500 3500 TROYS				
LARI I-HFW 22.6 JAAJ INT I-HFW 15.2 BAZAR INT I-HFW 11.7 SCHEL INT I-HFW 7.4 IM I-HFW 2.7 I-HFW 1.6				
7.4 NM 3.5 NM 4.4 NM 4.7 NM 1 NM 0.1				
CATEGORY	A	B	C	D
S-ILS 8L	1215/18 200 (200-½)			
S-LOC 8L	1440/24	425 (500-½)	1440/40	425 (500-¾)
SIDESTEP 8R	1440/55	416 (500-1)	1440-1½ 416 (500-½)	1440-2 416 (500-2)

