




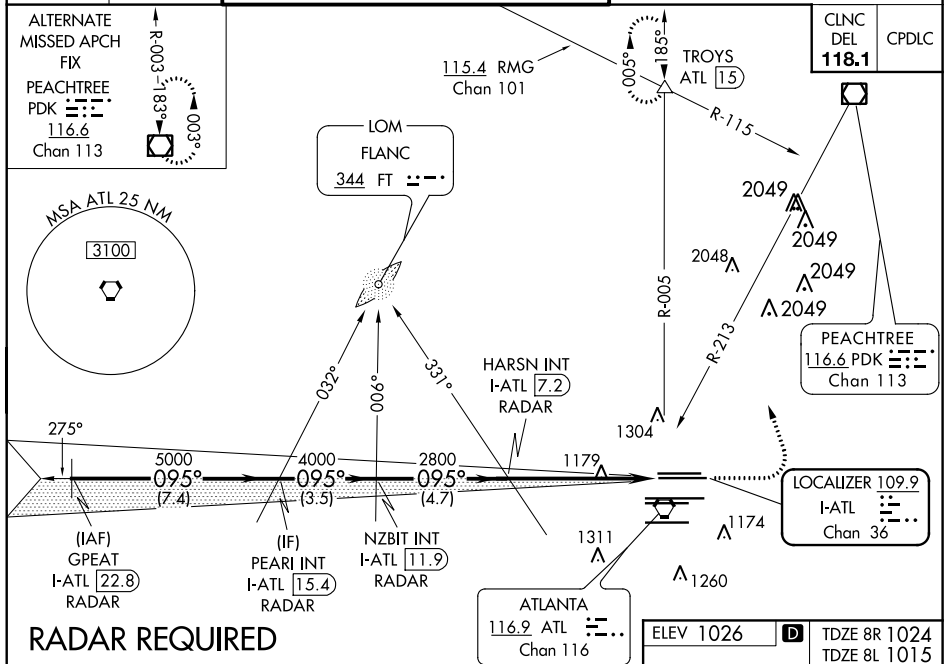
ILS or LOC RWY 8R  
HARTSFIELD-JACKSON ATLANTA INTL (ATL)

Rwy 8L  
ALSF-2

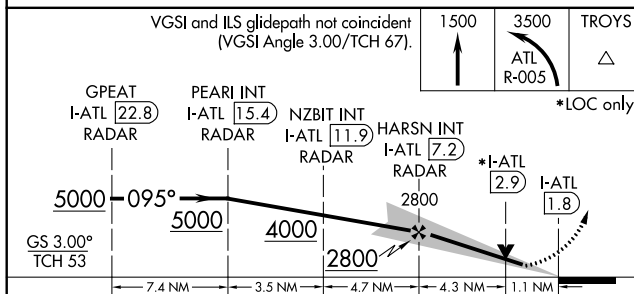
**MISSED APPROACH:** Climb to 1500 then climbing left turn to 3500 on ATL VORTAC R-005 to TROYS INT/ATL 15 DME and hold. (TACAN aircraft climb to 1500 then climbing left turn to 3500 on heading 005° for RADAR vectors.)

ALTERNATE  
MISSED APCH  
FIX  
PEACHTREE  
PDK   
116.6  
Chan 113

 R-003-183°  003°



## RADAR REQUIRED



CATEGORY	A	B	C	D	E
S-ILS 8R	1278/40 254 (300-¾)				
S-LOC 8R	1440/55	416 (500-1)	1440/60	416 (500-1½)	
SIDESTEP 8L	1440/55	425 (500-1)		1440-1½	425 (500-1½)

