

ATLANTA, GEORGIA

AL-26 (FAA)

ILS PRM RWY 10

(SIMULTANEOUS CLOSE PARALLEL)

HARTSFIELD-JACKSON ATLANTA INTL (ATL)

LOC/DME I-OMO <b>111.55</b> Chan <b>52</b> (Y)	APP CRS <b>095°</b>	Rwy Idg <b>9000</b> TDZE <b>1000</b> Apt Elev <b>1026</b>
--	------------------------	---

▼ DME or RADAR required. Simultaneous close parallel approach authorized with ILS PRM and RNAV PRM Rwy 8L or 8R or 9L or 9R, or Rwy 8L and 9L, or Rwy 8L and 9R, or Rwy 8R and 9L, or Rwy 8R and 9R. Procedure not authorized when glideslope not available. Dual VHF comm required. See additional requirements on AAUP. Localizer not suitable for electronic rollout avoidance.

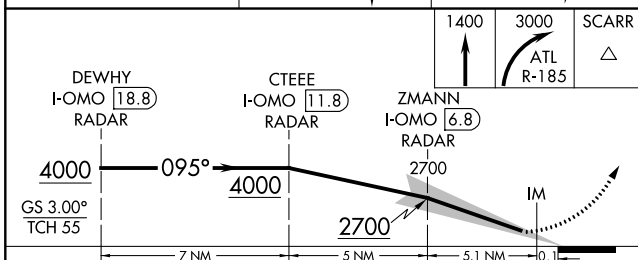
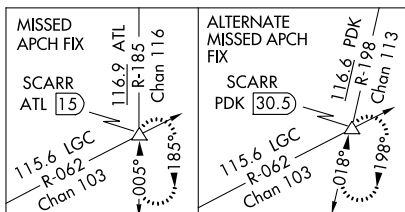
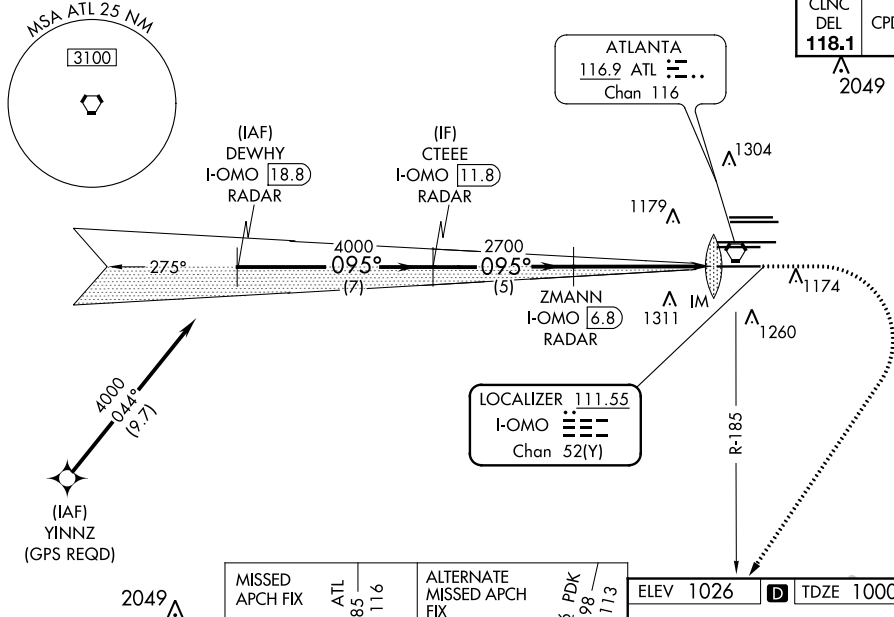
ALSF-2



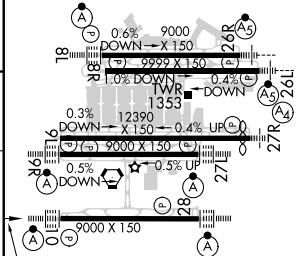
**MISSED APPROACH:** Climb to 1400 then climbing right turn to 3000 on ATL VORTAC R-185 to SCARR INT/ATL 15 DME and hold.

D-ATIS	ATLANTA	ATLANTA TOWER						ALL				
ARR <b>119.65</b>	APP CON	8L-26R	8R-26L	9L-27R	9R-27L	10-28	RWYS		(8L-26R,8R-26L)	(9L-27R,9R-27L)	10-28	ALL
DEP <b>125.55</b>	<b>127.9 379.9</b>	<b>119.1</b>	<b>125.325</b>	<b>123.85</b>	<b>119.3</b>	<b>119.5</b>	<b>254.4</b>		<b>121.9</b>	<b>121.75</b>	<b>121.65</b>	<b>254.4</b>
		<b>PRM 133.425</b>										

CLNC DEL <b>118.1</b>	CPDLC
-----------------------------	-------



ELEV 1026	<b>D</b>	TDZE 1000
-----------	----------	-----------



CATEGORY	A	B	C	D
S-ILS 10	1200/18 200 (200-½)			

HIRL all Rwys  
TDZ/CL Rwys 8L, 9R, 10, 26R,  
27L and 28

ATLANTA, GEORGIA

33°38'N-84°26'W

HARTSFIELD-JACKSON ATLANTA INTL (ATL)

Amdt 4 18SEP14

ILS PRM RWY 10 (SIMULTANEOUS CLOSE PARALLEL)

SE-4, 31 DEC 2020 to 28 JAN 2021

SE-4, 31 DEC 2020 to 28 JAN 2021