

ATLANTA, GEORGIA

AL-26 (FAA)

AA) ILS PRM RWY 27L (SA CAT I)
(SIMULTANEOUS CLOSE PARALLEL)

HARTSFIELD-JACKSON ATLANTA INTL (ATL)

LOC/DME I-FSQ	APP CRS	Rwy Idg	8865
<u>108.5</u>		TDZE	999
Chan 22	275°	Apt Elev	1026

T Simultaneous close parallel approach authorized with ILS PRM and RNAV PRM Rwy 26R or 26L or 28, or Rwy 26R and 28, or Rwy 26L and 28. Procedure not authorized when glideslope not available. Dual VHF comm required. See additional requirements on AAUP. Requires specific OPSPEC, MSPEC, or LOA approval and use of HUD to DH.

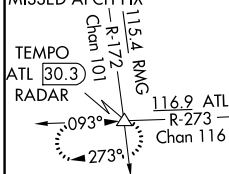
ALSF-2




MISSED APPROACH: Climb to 1400 then climbing left turn to 4000 on ATL VORTAC R-273 to TEMPO INT/ATL 30.3 DME/RADAR and hold.

D-ATIS	ATLANTA	ATLANTA TOWER						ALL	
ARR 119.65	APP CON	8L-26R	8R-26L	9L-27R	9R-27L	10-28	RWYS	GND CON	ALL
DEP 125.55	127.9 379.9	119.1	125.325	123.85	119.3	119.5	254.4	121.9	121.75 121.65 254.4
		PRM 132.55							

	MISSED APCH FIX
--	-----------------



LOCALIZER 108.5
I-FSQ
Chan 22

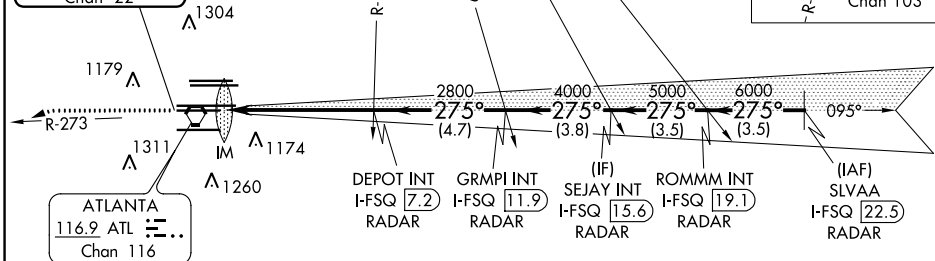
PEACHTREE
6.6 PDK 
Chan 113

CLNC
DEL
118.1

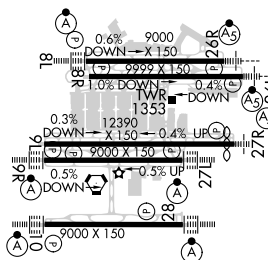
CPDLC

ALTERNATE MISSED
APCH FIX

Diagram illustrating a radar scan. The scan is divided into two segments: a 193° segment and a 13° segment. The 193° segment is labeled "TEMPO" and "LGC 34.7". The 13° segment is labeled "RADAR". The total scan angle is 115.6°, labeled "115.6 LGC Chan 103".

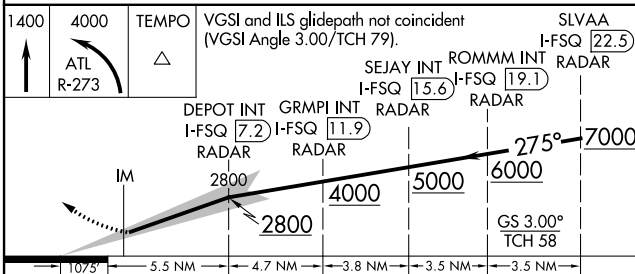


ELEV	1026	D	TDZE	999
------	------	----------	------	-----



HIRL all Rwy's
TDZ/CL Rwy's 8L, 9R,
10, 26R, 27L and 28

RADAR REQUIRED



CATEGORY	A	B	C	D
S-ILS 27L	RA 214/14 150 DA 1149			

SA CATEGORY I ILS- SPECIAL AIRCREW
& AIRCRAFT CERTIFICATION REQUIRED

ATLANTA, GEORGIA
Amdt 3A 15OCT15

33°38'N-84°26'W

HARTSFIELD-JACKSON ATLANTA INTL (ATL)

ILS PRM RWY 27L (SA CAT I) (SIMULTANEOUS CLOSE PARALLEL)

SE-4, 31 DEC 2020 to 28 JAN 2021

SE-4, 31 DEC 2020 to 28 JAN 2021