

ATLANTA, GEORGIA

AL-26 (FAA)

ILS PRM RWY 27R (SIMULTANEOUS CLOSE PARALLEL) HARTSFIELD-JACKSON ATLANTA INTL (ATL)

LOC I-AFA 111.3	APP CRS 275°	Rwy Idg TDZg Apt Elev	11690 985 1026
---------------------------	------------------------	-----------------------------	---

Simultaneous close parallel approach authorized with ILS PRM and RNAV PRM Rwy 26R or 26L or 28, or Rwy 26R and 28, or Rwy 26L and 28. Procedure not authorized when glideslope not available. Dual VHF comm required. See additional requirements on AAUP.

MALS MISSED APPROACH: Climb to 1400 then climbing left turn to 4000 on ATL VORTAC R-273 to TEMPO INT/ATL 30.3 DME/RADAR and hold.

D-ATIS ARR 119.65 DEP 125.55	ATLANTA APP CON 127.9 379.9	ATLANTA TOWER 8L-26R 8R-26L 9L-27R 9R-27L 10-28 RWYS 119.1 125.325 123.85 119.3 119.5 254.4 PRM 132.55	ALL RWYS 121.9 121.75 121.65 254.4
--	---------------------------------------	---	---

TEMPO
ATL **30.3**
RADAR

Chan 101

115.4 RMG

MISSED APCH FIX

116.9 ATL
R-273
Chan 116

093°

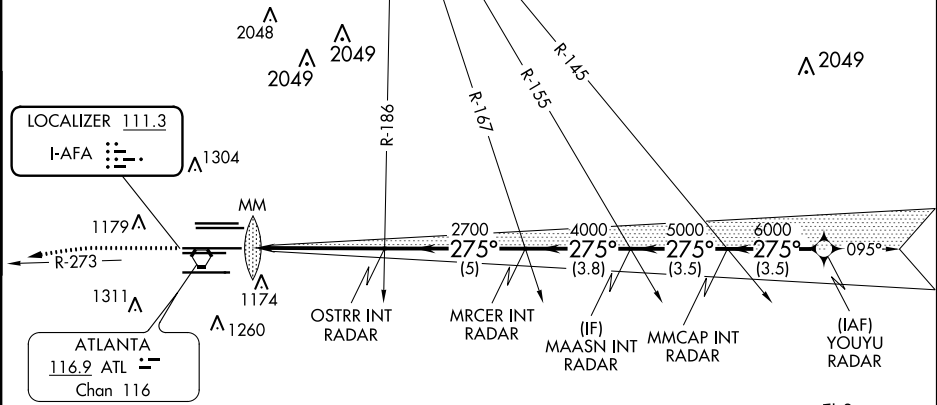
273°

PEACHTREE
116.6 PDK
Chan 113

CLNC
DEL
118.1

CPDLC

RADAR REQUIRED



ELEV 1026

D TDZE 985

ALTERNATE MISSED APCH FIX

TEMPO LGC **34.7** RADAR

115.6 LGC R-013 Chan 103

MSA ATL 25 NM

3100

HIRL all Rwy's
TDZ/CL Rwy's 8L, 9R, 10, 26R, 27L and 28

1400 4000 TEMPO

ATL R-273

VGSI and ILS glidepath not coincident (VGSI Angle 3.00/TCH 72).

YOUYU RADAR

Procedure Turn NA

7000

GS 3.00° TCH 56

OSTRR INT RADAR MRCER INT RADAR MMCAP INT RADAR MAASN INT RADAR

2700 4000 5000 6000

275°

MM

0.5 4.7 NM 5 NM 3.8 NM 3.5 NM 3.5 NM

CATEGORY	A	B	C	D
S-ILS 27R	1185/40 200 (200-¾)			

ATLANTA, GEORGIA
Amdt 2 18SEP14

33°38'N-84°26'W

HARTSFIELD-JACKSON ATLANTA INTL (ATL)

ILS PRM RWY 27R (SIMULTANEOUS CLOSE PARALLEL)

SE-4, 31 DEC 2020 to 28 JAN 2021

SE-4, 31 DEC 2020 to 28 JAN 2021