

WAAS CH 70400 W27B	APP CRS 275°	Rwy Idg 11690 TDZE 985 Apt Elev 1026
--	------------------------	---

RNAV (GPS) RWY 27R

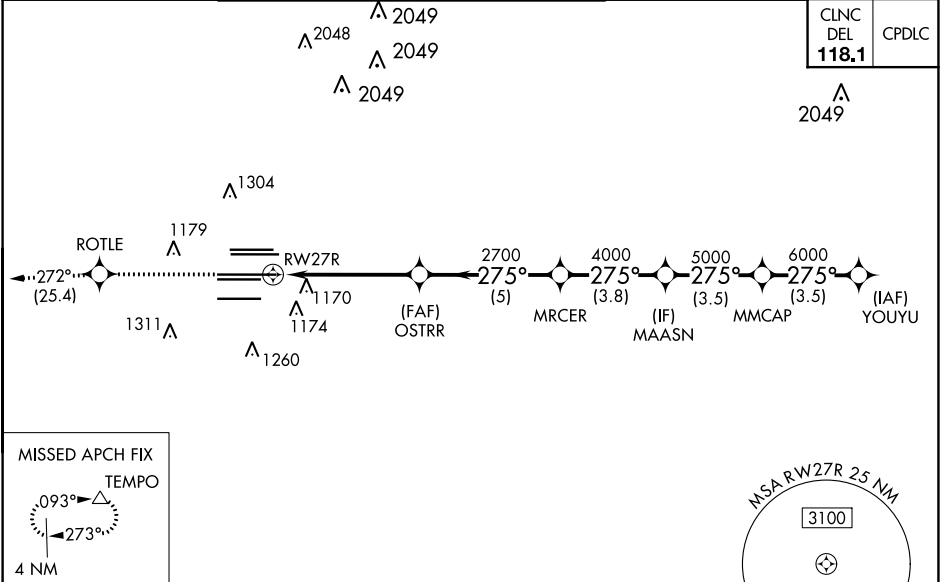
HARTSFIELD-JACKSON ATLANTA INTL (ATL)

▼ For uncompensated Baro-VNAV systems, LNAV/VNAV NA below -7°C (20°F) or above 54°C (130°F). Simultaneous approach authorized with Rwy 26R or 26L or 28, or Rwy 26R and 28. DME/DME RNP-0.3 NA. For inop MALS, increase LNAV/VNAV Cat D visibility and LNAV Cats C and D visibility ¼ mile. LNAV procedure NA during simultaneous operations. Use of FD or AP providing RNAV track guidance required during simultaneous operations. Inop table does not apply to LPV, all Cats.

MALS

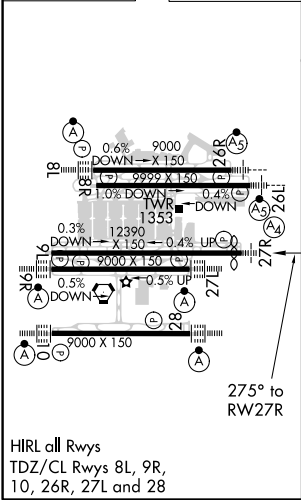
MISSED APPROACH:
Climb to 4000 direct
ROTLE and on track
272° to TEMPO and
hold.

D-ATIS ARR 119.65	ATLANTA APP CON 127.9 379.9	ATLANTA TOWER 8L-26R 8R-26L 9L-27R 9R-27L 10-28 RWYS 119.1 125.325 123.85 119.3 119.5 254.4					ALL RWYS 121.9	GND CON (8L-26R,8R-26L) (9L-27R,9R-27L) 10-28 121.75 121.65 254.4	ALL RWYS
-----------------------------	--	--	--	--	--	--	-----------------------------	--	-------------



ELEV 1026	D	TDZE 985
-----------	----------	----------

RADAR REQUIRED



4000	ROTLE	tr 272°	TEMPO	VGSI and RNAV glidepath not coincident (VGSI Angle 3.00/TCH 72).		YOUYU
*LNAV only.		*1.3 NM to RW27R		RW27R		7000
1.3		3.9 NM	5 NM	3.8 NM	3.5 NM	3.5 NM
CATEGORY	A	B	C	D		
LPV DA	1185/40		200 (200-¾)			
LNAV/VNAV DA	1461-1¾		476 (500-1¾)			
LNAV MDA	1460/40	475 (500-¾)	1460/60	475 (500-1¼)		