

WAAS CH 62800 W09D	APP CRS 095°	Rwy Idg 11730 TDZE 1019 Apt Elev 1026
--	------------------------	--

RNAV (GPS) RWY 9L

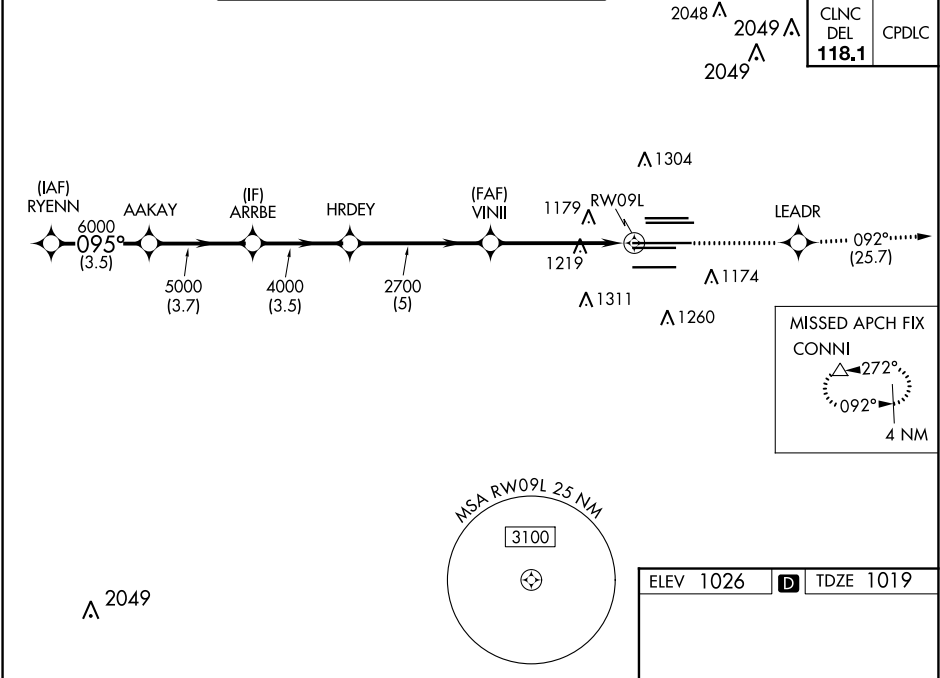
HARTSFIELD-JACKSON ATLANTA INTL (ATL)

RNP APCH.

▼ For uncompensated Baro-VNAV systems, LNAV/VNAV NA below -7°C or above 54°C. Rwy 9L helicopter visibility reduction below RVR 4000 NA. Simultaneous approach authorized with Rwy 8L or 8R or 10, or Rwy 8L and 10. LNAV procedure NA during simultaneous operations. Use of FD or AP providing RNAV track guidance required during simultaneous operations.

MISSED APPROACH: Climb to 4000 direct LEADR and on track 092° to CONNI and hold.

D-ATIS ARR 119.65 DEP 125.55	ATLANTA APP CON 127.9 379.9	ATLANTA TOWER 8L-26R 8R-26L 9L-27R 9R-27L 10-28 RWYS 119.1 125.325 123.85 119.3 119.5 254.4					GND CON ALL RWYS 121.9 121.75 121.65 254.4
--	--	--	--	--	--	--	---



RYENN		VGSi and RNAV glidepath not coincident [VGSi Angle 3.00/TCH 71].		4000	LEADR	tr 092°	CONNI
7000	095°	AAKAY	ARRBE	HRDEY	VINII	*LNAV only.	
6000		5000	4000	2700	2700	*1.2 NM to RW09L	
GP 3.00° TCH 56							
3.5 NM 3.7 NM 3.5 NM 5 NM 3.9 NM 1.2 NM							
CATEGORY	A		B	C	D		
LPV DA	1359/50		340 (400-1)				
LNAV/ VNAV DA	1405/60		386 (400-1¼)				
LNAV MDA	1480/55	461 (500-1)	1480-1⅜ 461 (500-1⅜)				

ELEV 1026

TDZE 1019

This detailed view shows the RWY 9L approach with the glide path (GP) at 3.00° and TCH 56. It includes various obstacles and terrain features, such as the 9000 ft obstacle at 1.0% DOWN, 12390 ft obstacle at 0.3% DOWN, and the 9000 ft obstacle at 0.5% UP. The RWY 9L is shown with a 9000 x 150 ft width.

095° to
RW09L

HIRL all Rwys
TDZ/CL Rwys 8L, 9R,
10, 26R, 27L and 28

SE-4, 31 DEC 2020 to 28 JAN 2021

SE-4, 31 DEC 2020 to 28 JAN 2021