

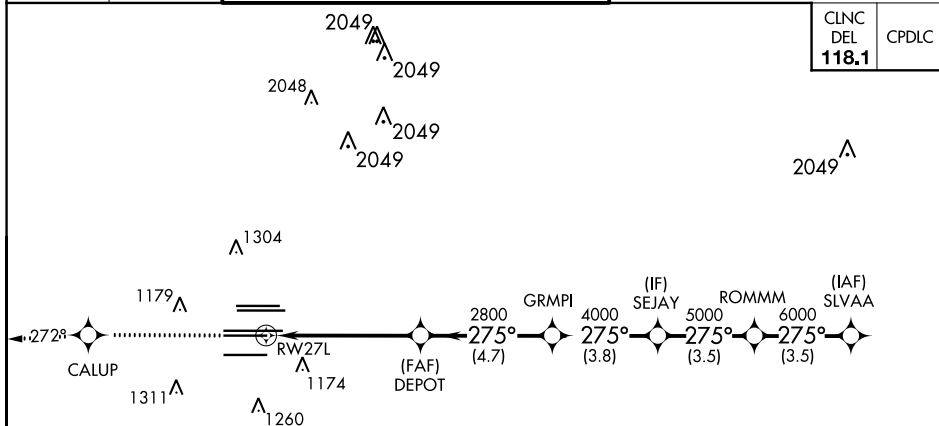
WAAS CH 65700 W27A	APP CRS 275°	Rwy Idg 8865 TDZE 999 Apt Elev 1026
--	------------------------	--



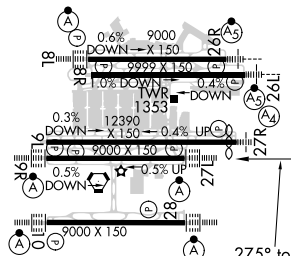
MISSED APPROACH: Climb to 4000 direct CALUP and on track 272° to TEMPO and hold.

ATLANTA TOWER					ALL
8L-26R	8R-26L	9L-27R	9R-27L	10-28	RWYS
119.1	125.325	123.85	119.3	119.5	254.4
PRM 132.55					

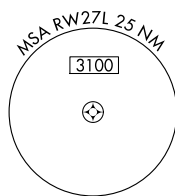
	GND CON		ALL
(8L-26R,8R-26L)	(9L-27R,9R-27L)	10-28	RWYS
121.9	121.75	121.65	254.4



ELEV	1026		TDZE	999
------	------	---	------	-----



RADAR REQUIRED



4000 CALUP TEMPO

tr 272°

VORTOP and RNAV glidepath not coincident
(VORTOP Angle 3.00/TCH 79).

SLVAA 7000

ROMMM 6000

SEJAY 5000

GRMPI 4000

DEPOT 2800

275°

2800

RW27L

GP 3.00°
TCH 58

5.5 NM 4.7 NM 3.8 NM 3.5 NM 3.5 NM

CATEGORY		A	B	C	D
LPV	DA	1199/18 200 (200-½)			
LNAV/ VNAV	DA	1528-1⅜ 529 (600-1⅝)			

HARTSFIELD-JACKSON ATLANTA INTL (ATL)

RNAV (GPS) PRM RWY 27L (SIMULTANEOUS CLOSE PARALLEL)

SE-4, 31 DEC 2020 to 28 JAN 2021

SE-4, 31 DEC 2020 to 28 JAN 2021