

# RNAV (GPS) PRM RWY 8R (SIMULTANEOUS CLOSE PARALLEL)

HARTSFIELD-JACKSON ATLANTA INTL (ATL)

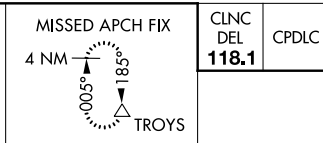
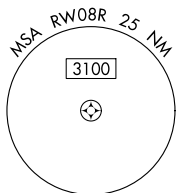
|  |                        |   |
|--|------------------------|---|
| WAAS<br>CH <b>48800</b><br><b>W08D</b> | APP CRS<br><b>095°</b> | Rwy Idg<br>TDZE <b>1024</b><br>Apt Elev <b>1026</b> |
|--|------------------------|---|

## RNP APCH.

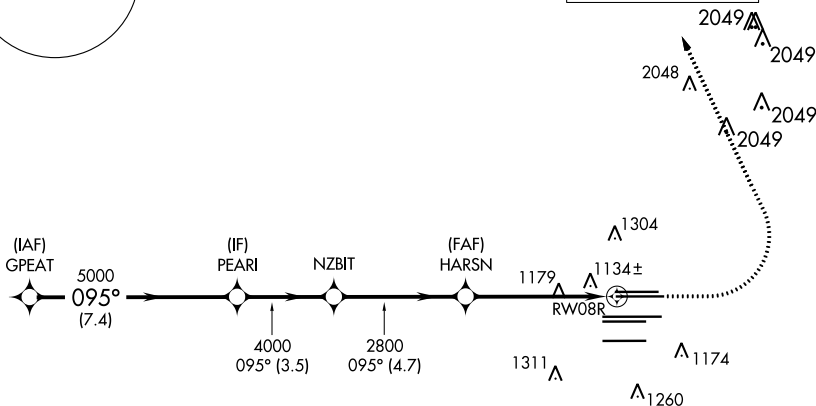
▼ For uncompensated Baro-VNAV systems, LNAV/VNAV NA below -7°C, or above 54°C.  
 ▲ NA Simultaneous close parallel approach authorized with ILS PRM and RNAV PRM Rwy 9L or 9R or 10, or Rwys 9L and 10, or Rwys 9R and 10. See additional requirements on AAUP.  
 Dual VHF comm required. Use of FD or AP providing RNAV track guidance required during simultaneous operations.

MISSED APPROACH: Climb to 1500 then climbing left turn to 3500 direct TROYS and hold.

| D-ATIS            | ATLANTA APP CON    | ATLANTA TOWER                                 | ALL RWYS         | GND CON                                 | ALL RWYS |
|-------------------|--------------------|---|------------------|---|----------|
| ARR <b>119.65</b> |                    | 8L-26R 8R-26L 9L-27R 9R-27L 10-28             |                  | (8L-26R, 8R-26L) (9L-27R, 9R-27L) 10-28 |          |
| DEP <b>125.55</b> | <b>127.9 379.9</b> | <b>119.1 125.325 123.85 119.3 119.5 254.4</b> | <b>PRM 126.9</b> | <b>121.9 121.75 121.65 254.4</b>        |          |

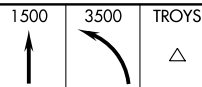


| CINC DEL     | CPDLC |
|--------------|-------|
| <b>118.1</b> |       |



## RADAR REQUIRED

VGSI and RNAV glidepath not coincident (VGSI Angle 3.00/TCH 67').



|                    | GPEAT  | PEARI   | NZBIT        | HARSN  | RW08R |
|--------------------|--------|---------|--------------|--------|-------|
| 5000               | 095°   | 5000    | 4000         | 2800   |       |
| GP 3.00°<br>TCH 53 |        |         |              |        |       |
|                    | 7.4 NM | 3.5 NM  | 4.7 NM       | 5.4 NM |       |
| CATEGORY           | A      | B       | C            | D      |       |
| LPV DA             |        | 1282/40 | 258 (300-¾)  |        |       |
| LNAV/VNAV DA       |        | 1516-1⅓ | 492 (500-1⅓) |        |       |

