

ATLANTA, GEORGIA

AL-26 (FAA)

RNAV (GPS) PRM RWY 9R
(SIMULTANEOUS CLOSE PARALLEL)
HARTSFIELD-JACKSON ATLANTA INTL (ATL)

WAAS CH 97400 W09B	APP CRS 095°	Rwy Idg 9000 TDZE 1026 Apt Elev 1026
--	------------------------	---

⚠ For uncompensated Baro-VNAV systems, LNAV/VNAV NA below -7°C (20°F) or above 54°C (130°F). DME/DME RNP-0.3 NA. Simultaneous close parallel approach authorized with ILS PRM and RNAV PRM Rwy 8L or 8R or 10, or Rwy 8L and 10, or Rwy 8R and 10. Dual VHF comm required. See additional requirements on AAUP. Use of FD or AP providing RNAV track guidance required during simultaneous operations.

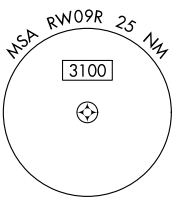
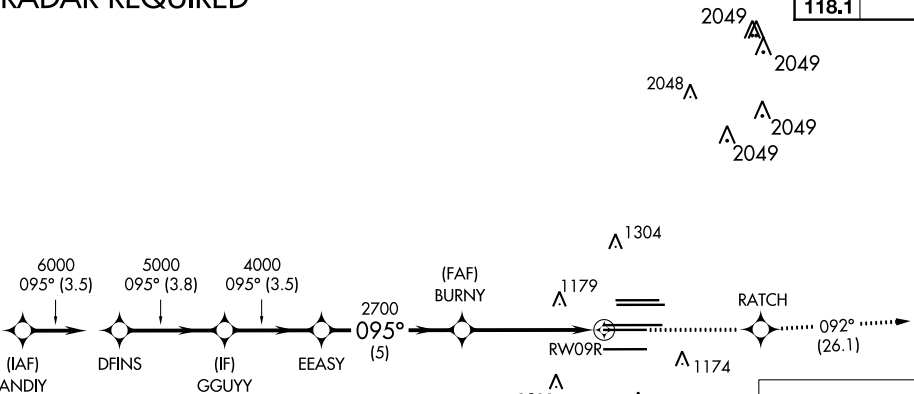
ALSIF-2

MISSED APPROACH:
Climb to 4000 direct RATCH and on track 092° to CONNI and hold.

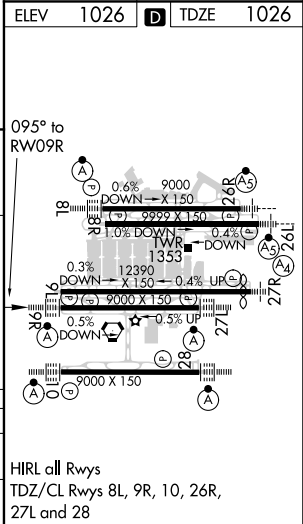
D-ATIS ARR 119.65 DEP 125.55	ATLANTA APP CON 127.9 379.9	ATLANTA TOWER 8L-26R 8R-26L 9L-27R 9R-27L 10-28 RWYS 119.1 125.325 123.85 119.3 119.5 254.4 PRM 132.55	ALL (8L-26R, 8R-26L) (9L-27R, 9R-27L) 10-28 RWYS 121.9 121.75 121.65 254.4
--	--	---	---

RADAR REQUIRED

CINCL DEL 118.1	CPDLC
------------------------------	-------



VGSI and RNAV glidepath not coincident (VGSI Angle 3.00/TCH 70).		4000	RATCH	tr 092°	CONNI
ANDY	DFINS	GGUYY	EEASY	BURNY	RWY 9R
7000	6000	5000	4000	2700	
GP 3.00° TCH 56		3.5 NM	3.8 NM	3.5 NM	5 NM
CATEGORY	A	B	C	D	
LPV DA	1226/18		200 (200-½)		
LNAV/VNAV DA	1403/40		377 (400-¾)		



RNAV (GPS) PRM RWY 9R (SIMULTANEOUS CLOSE PARALLEL)

SE-4, 31 DEC 2020 to 28 JAN 2021

SE-4, 31 DEC 2020 to 28 JAN 2021