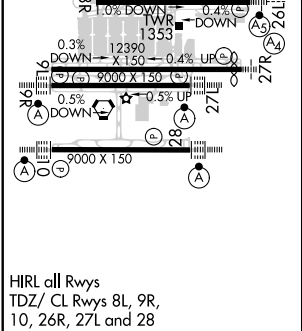
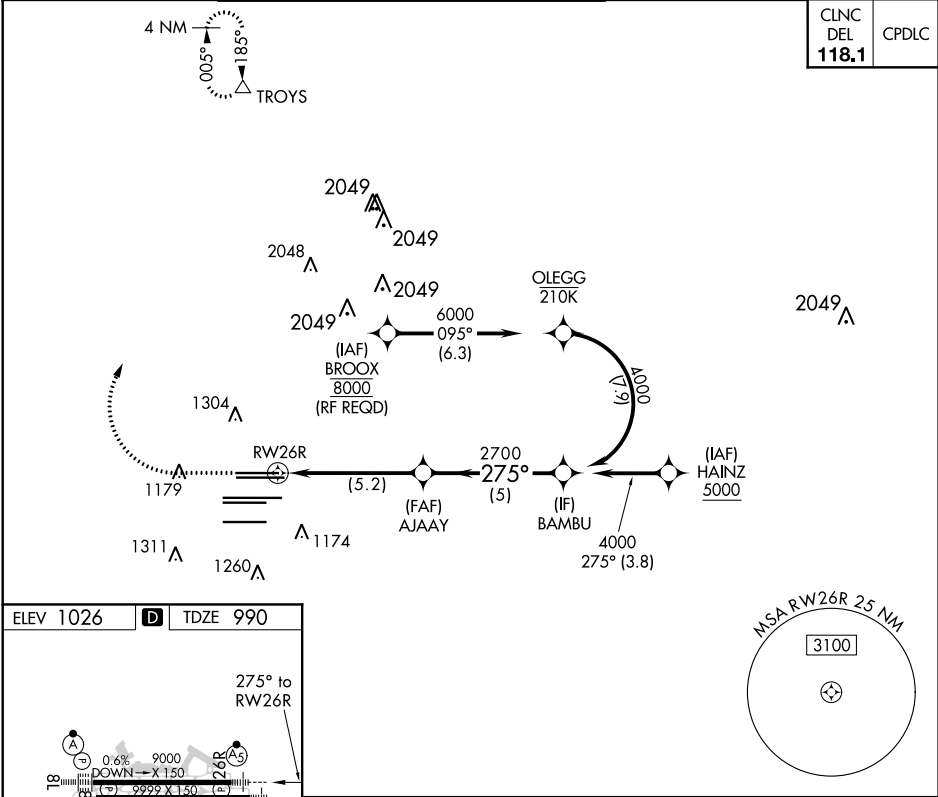





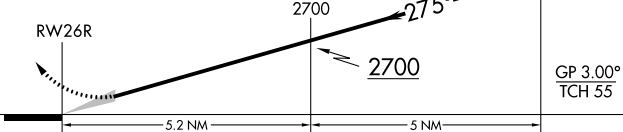
APP CRS	Rwy Idg	8500
275°	TDZE	990
	Apt Elev	1026

RNAV (RNP) Z RWY 26R
HARTSFIELD-JACKSON ATLANTA INTL (ATL)

For uncompensated Baro-VNAV systems, procedure NA below -8°C (18°F) or above 54°C (130°F). GPS required. Simultaneous approach authorized. Arrival from BROOX NA during simultaneous triple approaches.				MALSR 	MISSED APPROACH: Climb to 1500 then climbing right turn to 3500 direct TROYS and hold.
---	--	--	--	-----------	--

D-ATIS	ATLANTA	ATLANTA TOWER				ALL	GND CON		ALL
ARR 119.65	APP CON	8L-26R	8R-26L	9L-27R	9R-27L	10-28	RWYS	(8L-26R,8R-26L) (9L-27R,9R-27L)	10-28
DEP 125.55	127.9 379.9	119.1	125.325	123.85	119.3	119.5	254.4	121.9	121.75 121.65 254.4



1500	3500	TROYS	VGSI and RNAV glidepath not coincident (VGSI Angle 3.00/TCH 69).			
			BAMBU			
			AJAAY 2700		4000	
			2700		GP 3.00° TCH 55	
5.2 NM			5 NM			
CATEGORY	A		B	C	D	
RNP 0.30 DA	1402/45		412 (400-1)			
AUTHORIZATION REQUIRED						

SE-4, 31 DEC 2020 to 28 JAN 2021

SE-4, 31 DEC 2020 to 28 JAN 2021