

APP CRS	Rwy Idg	8800
<b>095°</b>	TDZE	1015
	Apt Elev	1026

RNAV (RNP) Z RWY 8L  
HARTSFIELD-JACKSON ATLANTA INTL (ATL)

**T** For uncompensated Baro-VNAV systems, procedure NA below -8°C (18°F) or above 54°C (130°F). GPS required. Simultaneous approach authorized. Arrival from BOLND NA during simultaneous triple approaches. For inop ALS, increase RNP 0.30 all Cats visibility to 1½ SM.

ALSF-2

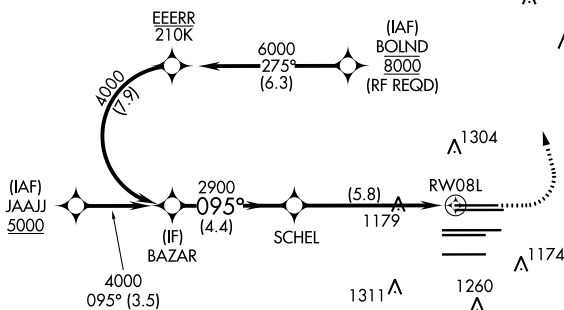
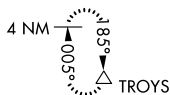
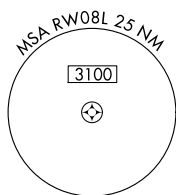


**MISSED APPROACH:** Climb to 1500 then climbing left turn to 3500 direct TROYS and hold.

D-ATIS	ATLANTA	ATLANTA TOWER					ALL	GND CON			ALL	
APP <b>119.65</b>	APP CON	8L-26R	8R-26L	9L-27R	9R-27L	10-28	RWYS	(8L-26R,8R-26L)	(9L-27R,9R-27L)	10-28	RWYS	
DEP <b>125.55</b>	<b>127.9</b>	<b>379.9</b>	<b>119.1</b>	<b>125.325</b>	<b>123.85</b>	<b>119.3</b>	<b>119.5</b>	<b>254.4</b>	<b>121.9</b>	<b>121.75</b>	<b>121.65</b>	<b>254.4</b>

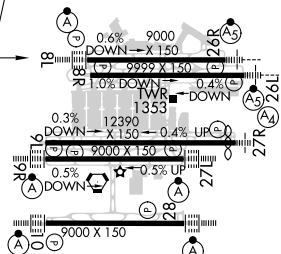
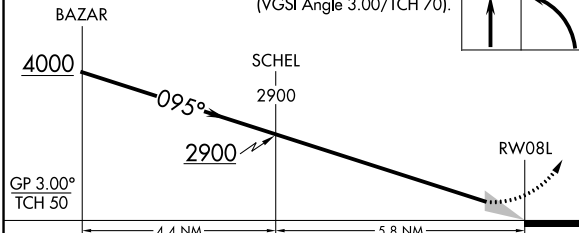
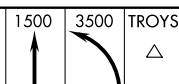
CLNC  
DEL  
118.1

CPDLC



ELEV 1026	<b>D</b>	TDZE 1015
-----------	----------	-----------

VGSI and RNAV glidepath not coincident  
(VGSI Angle 3.00/TCH 70).



CATEGORY	A	B	C	D
RNP 0.15 DA		1360/30	345 (400-%)	
RNP 0.30 DA		1437/50	422 (500-1)	