

LOC I-MZX <b>111.75</b>	APP CRS <b>172°</b>	Rwy Idg <b>8001</b> TDZE <b>146</b> Apt Elev <b>146</b>
----------------------------	------------------------	---

ILS or LOC RWY 17  
AUGUSTA RGNL AT BUSH FIELD (AGS)

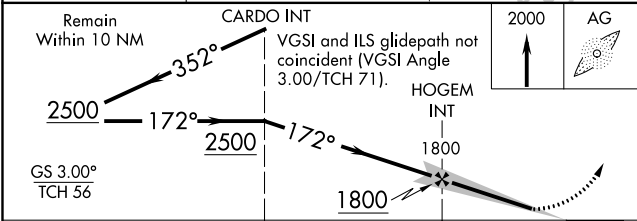
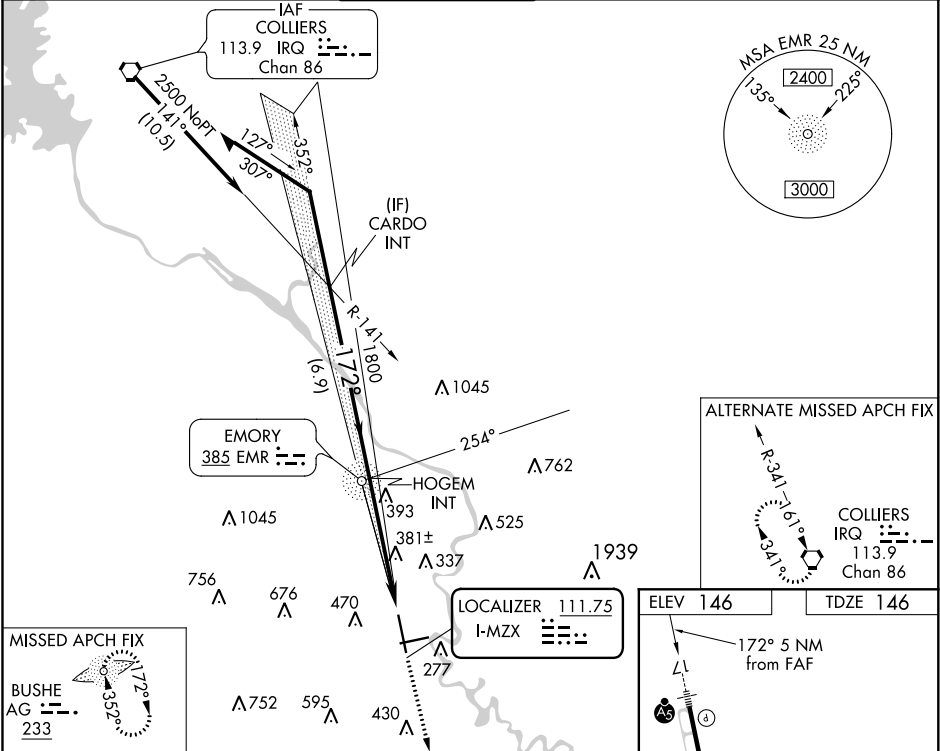
ADF required.

When local altimeter setting not received, use Daniel Field altimeter setting and increase all DA 55 feet and all MDA 60 feet; increase S-LOC 17 Cats C/D visibility to RVR 6000 and Circling Cats C/D visibility ¼ SM. For inop ALS, increase S-LOC 17 Cats C/D visibility to 1½ SM. For inop ALS when using Daniel Field altimeter setting, increase S-LOC 17 Cats C/D visibility to 1½ SM.

MALSRL

MISSED APPROACH:  
Climb to 2000 direct BUSHE LOM and hold.

ATIS <b>132.75</b>	AUGUSTA APP CON ★ <b>126.8 270.3</b>	AUGUSTA TOWER ★ <b>118.7 (CTAF) 0 239.3</b>	GND CON <b>121.9 348.6</b>	CLNC DEL <b>118.65</b>	UNICOM <b>122.95</b>
-----------------------	---	--	-------------------------------	---------------------------	-------------------------



CATEGORY	A	B	C	D
S-ILS 17		350/24	204 (300-½)	
S-LOC 17	640/24	494 (500-½)	640/50	494 (500-1)
CIRCLING	780-1	634 (700-1)	780-1¾ 634 (700-1¾)	900-2½ 754 (800-2½)

FAF to MAP 5 NM				
Knots	60	90	120	150
Min:Sec	5:00	3:20	2:30	2:00

SE-4, 31 DEC 2020 to 28 JAN 2021

SE-4, 31 DEC 2020 to 28 JAN 2021