

WAAS CH <b>97303</b> <b>W35A</b>	APP CRS <b>352°</b>	Rwy Idg <b>8001</b> TDZE <b>137</b> Apt Elev <b>146</b>
--	------------------------	---

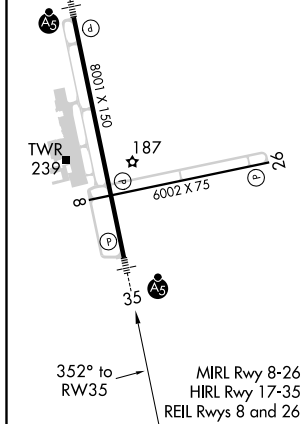
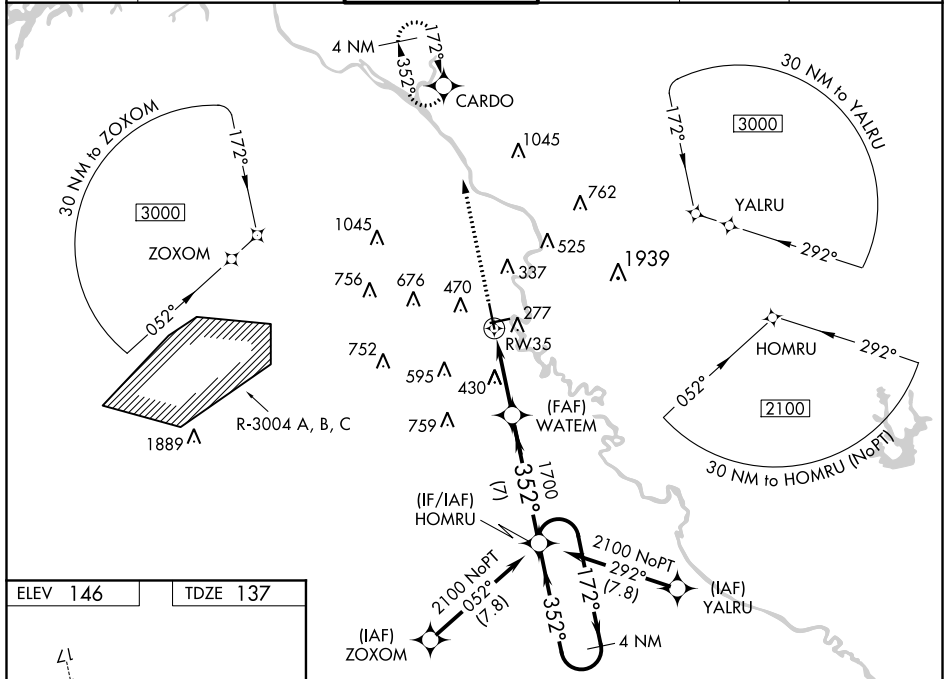
RNAV (GPS) RWY 35  
AUGUSTA RGNL AT BUSH FIELD (AGS)

**T** For uncompensated Baro-VNAV systems, LNAV/VNAV NA below -8°C (18°F) or above 43°C (109°F). Baro-VNAV and VDP NA when using Daniel Field altimeter setting. DME/DME RNP-0.3 NA. When local altimeter setting not received, use Daniel Field altimeter setting and increase all DA 55 feet and all MDA 60 feet; increase LNAV/VNAV all Cats and Circling Cats C/D visibility  $\frac{1}{4}$  SM, LNAV Cats C/D visibility  $\frac{1}{8}$  SM. For inop ALS, increase LNAV Cats C/D visibility to 1% SM. For inop ALS when using Daniel Field altimeter setting, increase LPV all Cats visibility to RVR 5000, and LNAV Cats C/D visibility to  $\frac{1}{4}$  SM.



**MISSED APPROACH:**  
Climb to 2400 direct  
CARDO and hold.

ATIS 132.75	AUGUSTA APP CON ★ 126.8 270.3	AUGUSTA TOWER ★ 118.7 (CTAF) 0 239.3	GND CON 121.9 348.6	CLNC DEL 118.65	UNICOM 122.95
----------------	----------------------------------	---	------------------------	--------------------	------------------



VGS1 and RNAV glidepath not coincident  
(VGS1 Angle 3.00/TCH 72).

4 NM Holding Pattern

HOMRU

172° → 2100  
← 352°

\*RNAV only.

RW35

WATM 1700

1700

1.5 NM 3.3 NM 7 NM

GP 3.00°  
TCH 56

CATEGORY	A	B	C	D
LPV DA		387/24	250 (300-½)	
LNAV/VNAV DA		657/60	520 (600-1¼)	
LNAV MDA	680/24	543 (600-½)	680/60	543 (600-1¼)
<b>C</b> CIRCLING	780-1	634 (700-1)	780-1¾ 634 (700-1¾)	900-2½ 754 (800-2½)