

APP CRS	Rwy Idg	3407
108°	TDZE	422
	Apt Elev	422

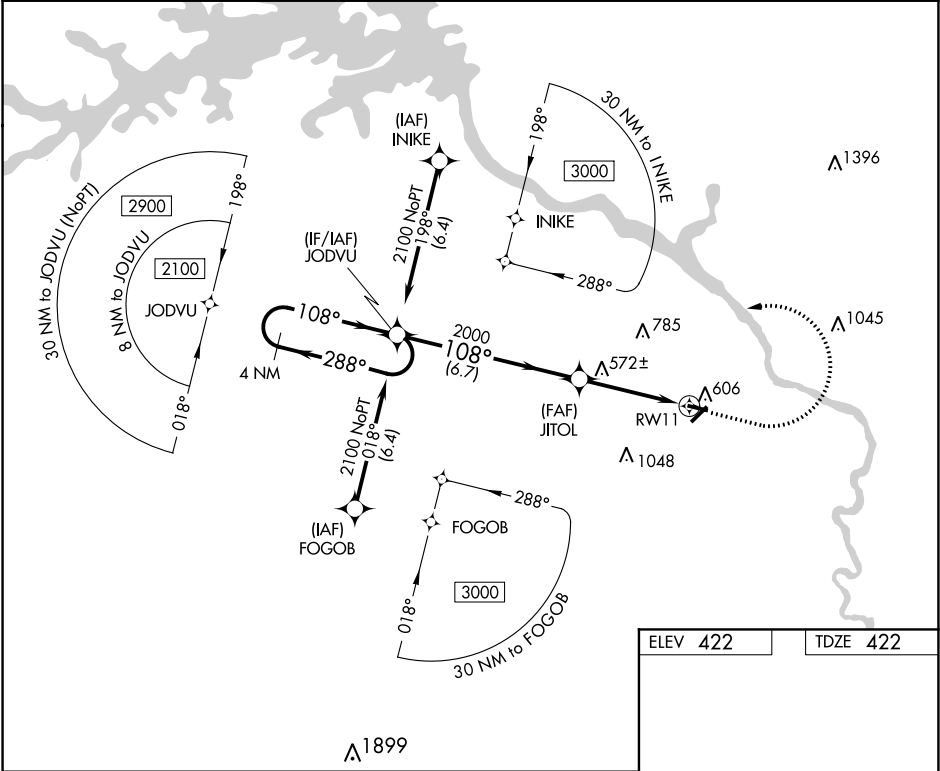
RNAV (GPS) Y RWY 11
DANIEL FIELD (DNL)

ASR

DME/DME RNP-0.3 NA. Procedure NA at night. When local altimeter setting not received, use Augusta Rgnl at Bush Field altimeter setting and increase all MDA 60 feet and increase LNAV Cat C and D visibility ¼ SM. Rwy 11 helicopter visibility reduction below 1 SM NA.

MISSED APPROACH: Climb to 1400 then climbing left turn to 2100 direct JODVU and hold.

ASOS 135.275	AUGUSTA APP CON ★ 126.8 270.3	UNICOM 123.05 (CTAF) ①
-----------------	----------------------------------	---------------------------



4 NM Holding Pattern

Visual Segment - Obstacles.

JODVU

JITOL

RW11

2100

288°

108°

108°

2000

6.7 NM

4.1 NM

CATEGORY	A	B	C	D
LNAV MDA	840-1	418 (500-1)	840-1 1/8	418 (500-1 1/8)
CIRCLING	920-1	498 (500-1)	1400-3	978 (1000-3)

ELEV 422

TDZE 422

REIL Rwy 11 ①

MIRL Rwy 5-23 and 11-29 ①

SE-4, 31 DEC 2020 to 28 JAN 2021

SE-4, 31 DEC 2020 to 28 JAN 2021