

|            |         |          |     |
|------------|---------|----------|-----|
| VORTAC IRQ | APP CRS | Rwy Idg  | N/A |
| 113.9      | 161°    | TDZE     | N/A |
| Chan 86    |         | Apt Elev | 422 |

VOR/DME-B

DANIEL FIELD (DNL)

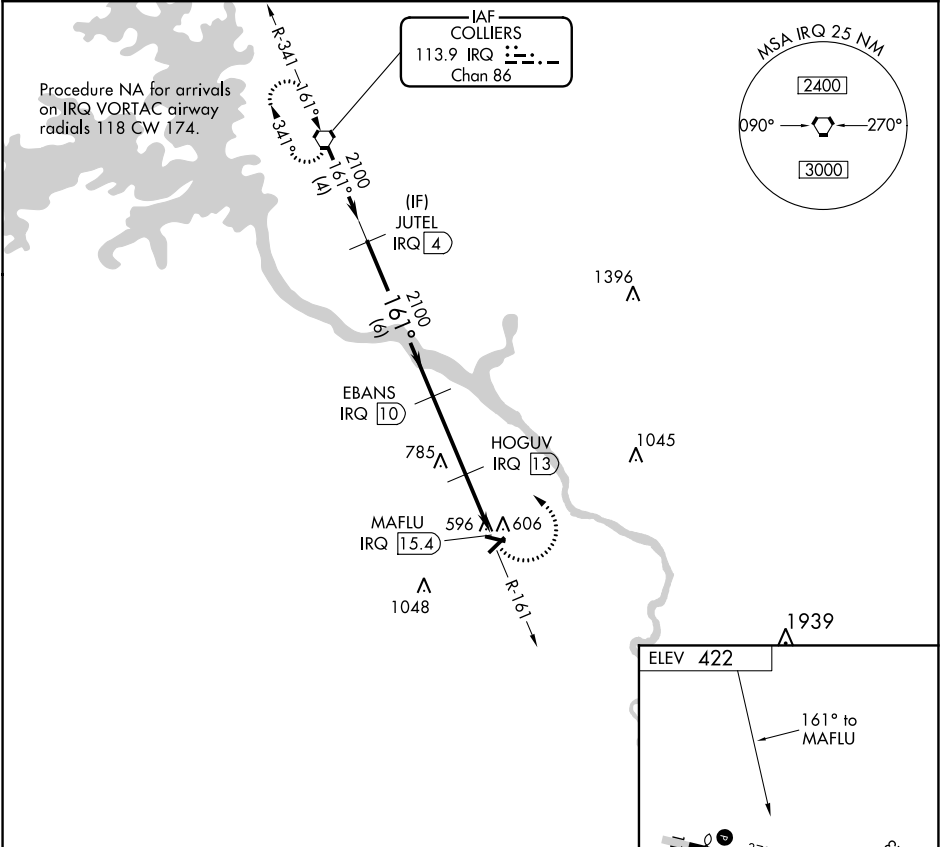
⚠

ASR

When local alimeter setting not received, use Augusta Rgnl at Bush Field altimeter setting and increase all MDA 60 feet. Procedure NA at night. Helicopter visibility reduction below 1 SM NA.

MISSED APPROACH: Climbing left turn to 2100 direct IRQ VORTAC and hold.

|         |                   |                 |
|---------|-------------------|-----------------|
| ASOS    | AUGUSTA APP CON ★ | UNICOM          |
| 135.275 | 126.8 270.3       | 123.05 (CTAF) 0 |



Procedure Turn NA

2100

161°

2100

161°

1160

6 NM

3 NM

2.4 NM

2100

IRQ

EBANS

HOGUV

MAFLU

|          |       |             |        |              |
|----------|-------|-------------|--------|--------------|
| CATEGORY | A     | B           | C      | D            |
| CIRCLING | 920-1 | 498 (500-1) | 1400-3 | 978 (1000-3) |

ELEV 422

161° to MAFLU

3733 X 100

3002 X 100

1.2% UP

REIL Rwy 11 0

MIRL Rwys 5-23 and 11-29 0