

19227

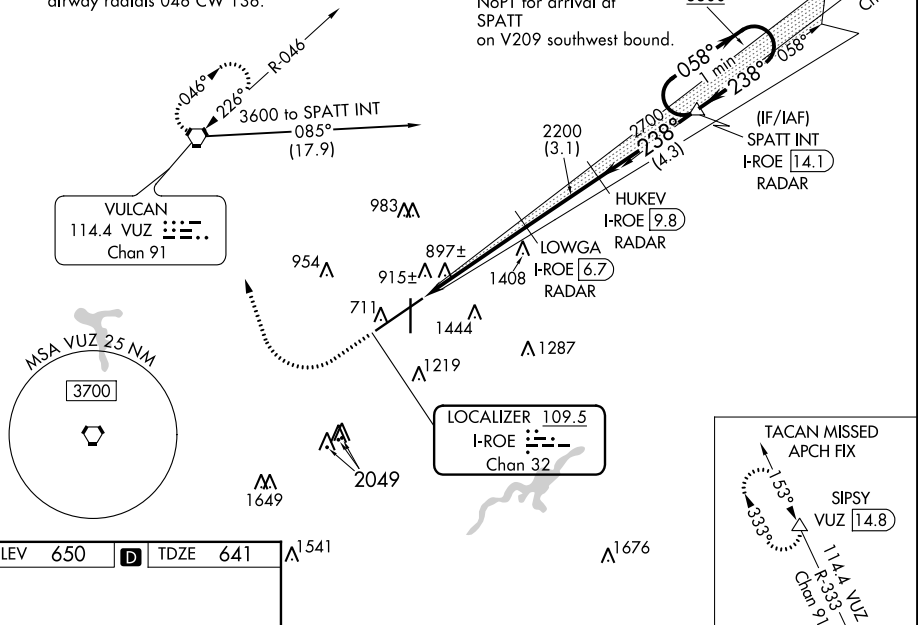
ILS RWY 24 (SA CAT II)
BIRMINGHAM-SHUTTLESWORTH INTL (BHM)

MALSR

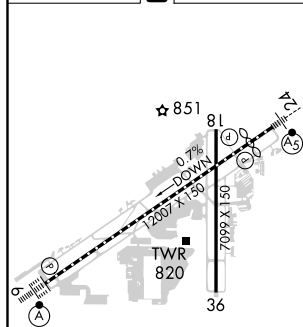
MISSED APPROACH: Climb to 1300 then climbing right turn to 3000 direct VUZ VORTAC and hold (TACAN aircraft continue on VUZ VORTAC R-333 to SIPSY/VUZ 14.8 DME and hold NW, right turn, 153° inbound).

ATIS 119.4 270.1	BIRMINGHAM APP CON 123.8 256.8	BIRMINGHAM TOWER 119.9 317.725	GND CON 121.7 348.6	CLNC DEL 125.675 305.2
---------------------	-----------------------------------	-----------------------------------	------------------------	---------------------------

NoPT for arrival at
SPATT
on V209 southwest bound



ELEV	650	D	TDZE	641
------	-----	----------	------	-----



REIL Rwy 18 and 36
TDZ/CL Rwy 6
HIRL Rwy 6-24
MIRL Rwy 18-36

1300 3000 VUZ

VGS and ILS glidepath not coincident
(VGS Angle 3.00/TCH 69). SPATT INT

LOWGA I-ROE 6.7 RADAR

HUKEV I-ROE 9.8 RADAR

I-ROE 14.1 RADAR

One Minute Holding Pattern

2200 2700 5100

058° 238°

GS 3.00° TCH 52

1235 4.7 NM 3.1 NM 4.3 NM

CATEGORY	A	B	C	D
S-ILS 24	SA CAT II	RA 92/12	100 DA 741	

SA CATEGORY II ILS-SPECIAL AIRCREW
& AIRCRAFT CERTIFICATION REQUIRED

BIRMINGHAM-SHUTTLESWORTH INTL (BHM)

33°34'N-86°45'W

ILS RWY 24 (SA CAT II)

SE-4, 31 DEC 2020 to 28 JAN 2021