

APP CRS  
**003°**

Rwy Idg  
**7099**

TDZE  
**634**

Apt Elev  
**650**

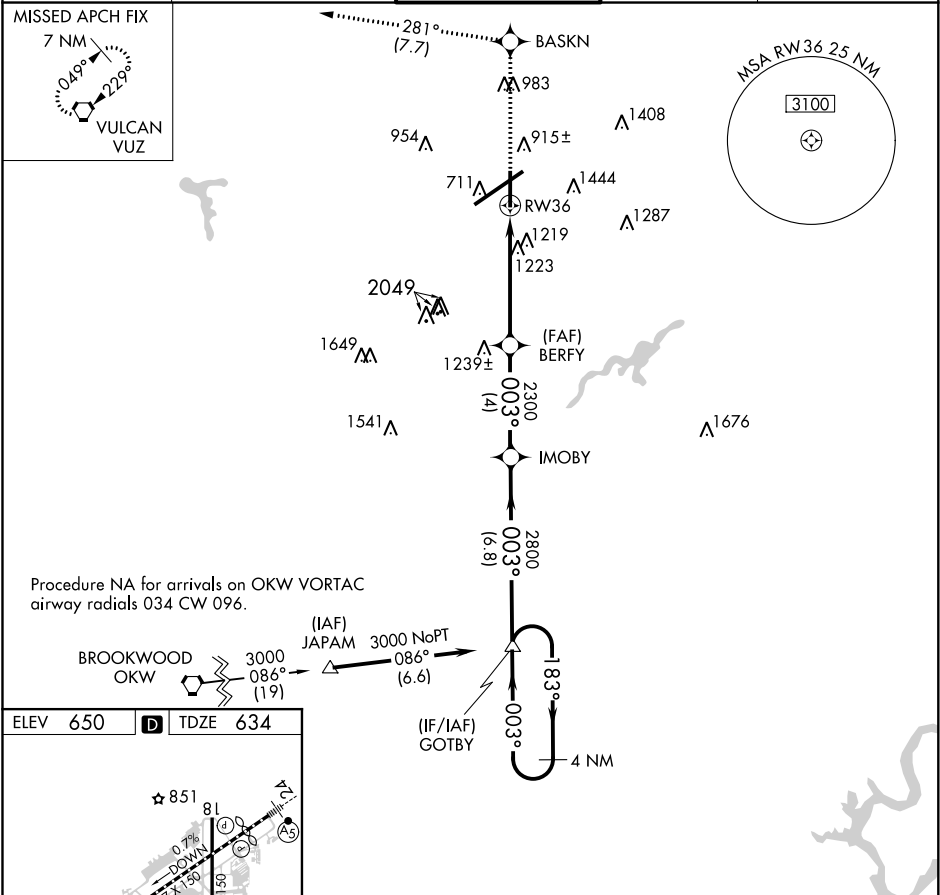
**RNAV (GPS) RWY 36**

BIRMINGHAM-SHUTTLESWORTH INTL (BHM)

**⚠** DME/DME RNP-0.3 NA. Rwy 36 helicopter visibility reduction below 1 SM NA. Procedure NA at night.

MISSED APPROACH: Climb to 3000 direct BASKN and on track 281° to VUZ VORTAC and hold.

ATIS <b>119.4 270.1</b>	BIRMINGHAM APP CON <b>123.8 256.8</b>	BIRMINGHAM TOWER <b>119.9 317.725</b>	GND CON <b>121.7 348.6</b>	CLNC DEL <b>125.675 305.2</b>
----------------------------	--	--	-------------------------------	----------------------------------



3000	BASKN	VUZ	Visual Segment - Obstacles.		4 NM
↑	tr 281°	tr 281°	IMOBY	GOTBY	Holding Pattern
			BERFY		
			RW36		
			2300	2800	183°
			5 NM	4 NM	6.8 NM
CATEGORY	A	B	C	D	
LNAV MDA	1480-1 847 (900-1)	1480-1¼ 847 (900-1¼)	1480-2½ 847 (900-2½)		